



# NIKE SOCCER






# MOVE TO ZERO



## Helping Protect The Future Of Sport For All Athletes\*

Move to Zero is Nike's journey toward zero carbon and zero waste to help protect the future of sport. We exist to serve athletes everywhere and that's why we're on a mission to help ensure a healthy planet. For us, there is no finish line.

[NikeTeam.com](https://www.nike.com) will now display a sunburst logo next to products made with sustainable materials.

Look for this logo  Sustainable Materials to find products made with at least 50% sustainable materials by weight, exclusive of trims. Sustainable materials include recycled polyester or organic cotton.

Recycled polyester reduces carbon emissions and waste.

Organic cotton is grown without synthetic fertilizers and with less water than conventional cotton.



For more information on Nike Sustainability please visit [nike.com/sustainability](https://nike.com/sustainability) or [purpose.nike.com](https://purpose.nike.com).



# TABLE OF CONTENTS



**STOCK JERSEYS** 4

**DIGITAL KIT** 32

**STOCK SHORTS** 34

**SOCKS** 44

**GOALKEEPER** 47

**REFEREE** 58

**TRAINING** 63

**ESSENTIALS** 131

**EQUIPMENT / ACCESSORIES** 153

**TEAM CONTACT INFORMATION** 164

**HEADWEAR INFORMATION** 165



# NIKE DRI-FIT ADV VAPOR V JERSEY

M • FZ9273    W • FZ9278    K • FZ9281

- 1 Heat Transfer Swoosh**  
Swoosh execution is a high density heat transfer. The garment will also accept Direct Embroidery and Screen Prints.
- 2 Recycled Materials**  
This garment is made with 100% recycled materials.
- 3 Cross Dye Technique**  
The body fabric is executed in a cross dyed technique to amplify the knit language through tonal colors.
- 4 Performance Fabrics**  
Dri-FIT ADV knit fabric on the front body, back body, and sleeves wicks sweat away, while mesh side panels offer breathability where athletes need it most.
- 5 Fit For All Athletes**  
Continuing the new Women's fit, adding more space to the waist, allowing Her to be at Her best. Fit remains consistent for Men and Kids.
- 6 Signifier Language**  
A direct one to one link of the EC24 chassis, celebrating the best athletes on the pitch.
- 7 Side Panel Construction**  
The side panel is continued from the EC24 chassis which contributes to the efficiency of our patterns, reducing material waste.



 Sustainable Materials  
[Nike.com/sustainability](https://nike.com/sustainability)

**NIKE DRI-FIT ADV VAPOR V JERSEY SS US**

**\$77.00**

**FABRIC:** 100% polyester. **OFFER DATE:** 01/01/25 **END DATE:** 12/31/26

Designed for the biggest stages in soccer, now offered to your players. The VaporKnit V jersey is made with mesh side panels, premium knit fabric and the advanced sweat-wicking power of Nike Dri-FIT ADV. This product is made with at least 75% recycled polyester fibers. Side panel construction uses a more efficient pattern to help reduce material waste.

(Body / Neck Rib - Sleeve Cuff / Underarm - Side Panel / (Swoosh)

- 010** Black with Anthracite Combo / Black / Black / (White)
- 100** White with Pure Platinum Combo / White / White / (Black)
- 410** Midnight Navy with Loyal Blue Combo / Midnight Navy / Midnight Navy / (White)
- 463** Royal Blue with Sport Blue Combo / Royal Blue / Royal Blue / (White)
- 657** University Red with Speed Red Combo / University Red / University Red / (White)



**MENS / FZ9273**

**SIZES:** XS, S, M, L, XL, 2XL



**WOMENS / FZ9278**

**SIZES:** XS, S, M, L, XL, 2XL



**KIDS / FZ9281**

**SIZES:** XS, S, M, L, XL

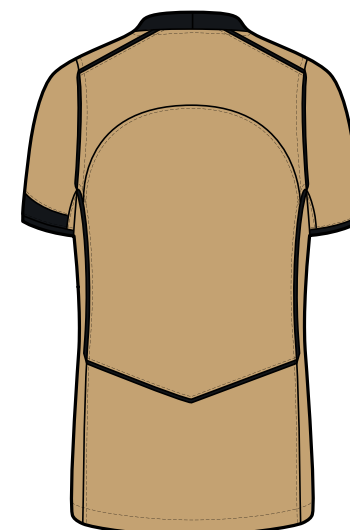
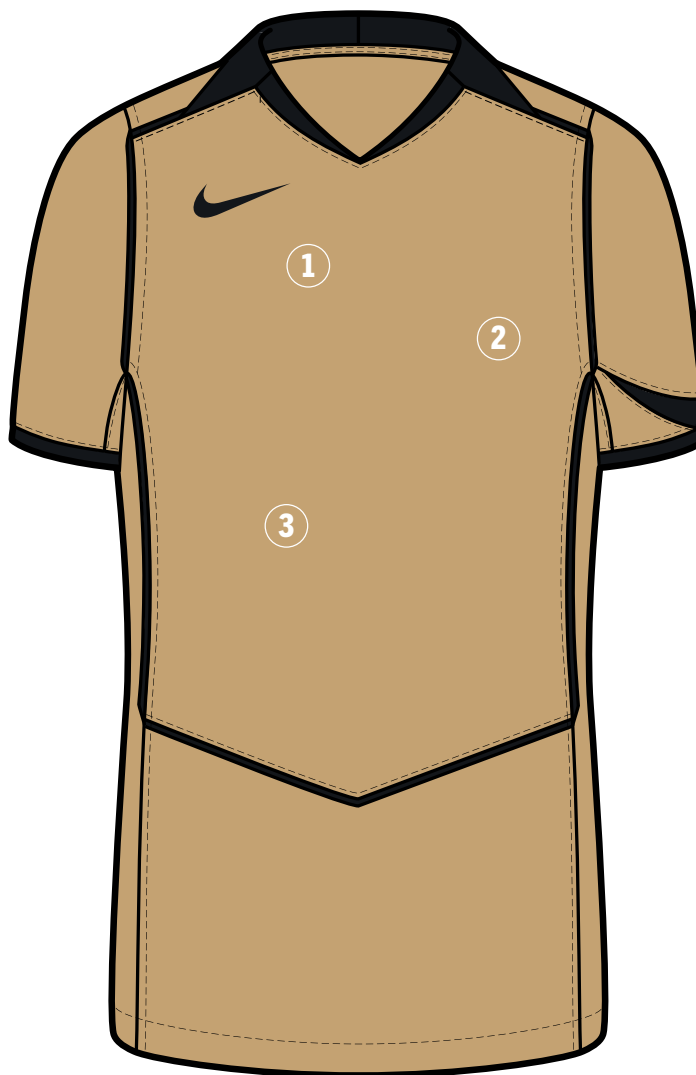


Sustainable Materials

# NEW NIKE T90 SS JERSEY

M • IQ8093 W • IQ8096 K • IQ8099

- 1 Iconic Design Line**  
Leveraging the branded and licensed teams T90 design line into Team.
- 2 Recycled Materials**  
This garment is made with 99% recycled materials through Mechanically Recycled method from PET bottles.
- 3 Performance Fabrics**  
Dri-FIT knit fabric on the main body wicks sweat away, while mesh side panels offer breathability where athletes need it most.



 Sustainable Materials  
[Nike.com/sustainability](https://nike.com/sustainability)

**NEW**  
**NIKE T90 SS JERSEY**  
**\$60.00**

FABRIC: 100% polyester. OFFER DATE: 04/01/26 END DATE: 12/31/27

Designed to perform through all 90 minutes of a match, the Total 90 collection became one of the iconic kits of the 2000s thanks to its curving lines, asymmetric designs and mixed materials. • Nike Dri-FIT technology moves sweat away from skin for quicker evaporation, helping athletes stay dry and comfortable. • Lightweight knit fabric has a soft, smooth feel. • Men's and Kids slim fit intent for a tailored look and feel. • Women's not too tight or overly baggy, this top is made with the classic Nike fit your athletes know and love.

- |                                   |                                |                                |
|-----------------------------------|--------------------------------|--------------------------------|
| <b>010</b> Black/(White)          | <b>100</b> White/(Wolf Grey)   | <b>341</b> Gorge Green/(White) |
| <b>419</b> College Navy/(White)   | <b>448</b> Valor Blue/(White)  | <b>480</b> Game Royal/(White)  |
| <b>657</b> University Red/(White) | <b>729</b> Jersey Gold/(Black) | <b>891</b> Team Orange/(White) |



**MENS / IQ8093**  
 SIZES: XS, S, M, L, XL, 2XL, 3XL



**WOMENS / IQ8096**  
 SIZES: XS, S, M, L, XL



**KIDS / IQ8099**  
 SIZES: XS, S, M, L, XL



# NEW NIKE REVOLUTION SS JERSEY

M • HV8128 W • HV8133 K • HV8138

- 1 Direct Embroidery Swoosh**  
Swoosh execution is embroidered directly onto the garment. The garment will also accept Heat Transfer and Screen Prints.
- 2 Recycled Materials**  
This garment is made with 100% recycled materials through Chemically recycled-Textile to textile method.
- 3 1-1 Rib at Neck & Sleeve Construction**
- 4 All Over Print Execution**  
This will be a sublimated front panel. It will be placed randomly on the vertical, to optimize usage of material and reduce waste, but will result in subtle variations kit to kit.
- 5 Same Performance Fabrics**  
Dri-FIT knit fabric on the front body, back body, and sleeves wicks sweat away, while mesh side panels offer breathability where athletes need it most.
- 6 Fit For All Athletes**  
Continuing the new Women's fit, adding more space to the waist, allowing Her to be at Her best. Fit remains consistent for Men and Youth.



 Sustainable Materials  
[Nike.com/sustainability](https://www.nike.com/sustainability)

**NEW**  
**NIKE REVOLUTION SS JERSEY**  
**\$50.00**

FABRIC: 100% polyester. OFFER DATE: 04/01/26 END DATE: 12/31/27

Nike Dri-FIT technology moves sweat away from skin for quicker evaporation, helping athletes stay dry and comfortable. • Mesh panels provide breathability where athletes need it most. • Graphic is randomly placed to help optimize material usage and reduce waste. • This garment is made with at least 75% recycled materials. • Men's and Kids slim fit intent for a tailored look and feel. • Updated women's fit adds more space to the waist.

- 010 Black/White/(White)
- 100 White/Black/(Black)
- 419 College Navy/Game Royal/(White)
- 657 University Red/Team Red/(White)
- 012 Wolf Grey/Anthracite/(Black)
- 354 Hyper Turq/Teal Nebula/(Black)
- 480 Game Royal/College Navy/(White)



**MENS / HV8128**  
 SIZES: XS, S, M, L, XL, 2XL, 3XL



**WOMENS / HV8133**  
 SIZES: XS, S, M, L, XL



**KIDS / HV8138**  
 SIZES: XS, S, M, L, XL



# NIKE DRI-FIT STRIKE IV JERSEY

M • FZ9327 W • FZ9329 K • FZ9331

- 1 Direct Embroidery Swoosh**  
Swoosh execution is embroidered directly onto the garment. The garment will also accept Heat Transfer and Screen Prints.
- 2 Recycled Materials**  
This garment is made with 100% recycled materials.
- 3 Cross Dye Technique**  
The body fabric is executed in a cross dyed technique with a horizontal stripe aesthetic through tonal colors.
- 4 Performance Fabrics**  
Dri-FIT knit fabric on the front body, back body, and sleeves wicks sweat away, while mesh side panels offer breathability where athletes need it most.
- 5 Fit For All Athletes**  
Continuing the new Women's fit, adding more space to the waist, allowing Her to be at Her best. Fit remains consistent for Men and Kids.
- 6 Signifier Language**  
A direct one to one link of the EC24 chassis, celebrating the best athletes on the pitch.
- 7 Side Panel Construction**  
The side panel is continued from the EC24 chassis which contributes to the efficiency of our patterns, reducing material waste.



 Sustainable Materials  
[Nike.com/sustainability](https://nike.com/sustainability)

**NIKE DRI-FIT STRIKE IV JERSEY SS US**

**\$50.00**

**FABRIC:** 100% polyester. **OFFER DATE:** 01/01/25 **END DATE:** 12/31/26

Inspired by what the best players wear on the biggest stages in soccer, Dri-FIT technology works with breathable mesh side panels to help keep athletes cool and composed during fast-paced play. A slim, streamlined fit ensures that nothing comes between your players and the ball. This product is made with 100% recycled polyester fibers. Side panel construction uses a more efficient pattern to help reduce material waste.

(Body / Underarm / Side Panel / Rib / (Swoosh)

- 010** Black with Anthracite Blend / Black / Black / Black / (White)
- 012** Wolf Grey with Pure Platinum Blend / Black / Bright Crimson / Bright Crimson / (White)
- 100** White with Pure Platinum Blend / White / White / White / (Black)
- 354** Hyper Turq with Tropical Twist Blend / Black / Hyper Turq / Hyper Turq / (Black)
- 410** Midnight Navy with Loyal Blue Blend / White / Midnight Navy / Midnight Navy / (White)
- 463** Royal Blue with Sport Blue Blend / White / Royal Blue / Royal Blue / (White)
- 657** University Red with Speed Red Blend / Black / University Red / University Red / (White)



**MENS / FZ9327**

**SIZES:** XS, S, M, L, XL, 2XL, 3XL



**WOMENS / FZ9329**

**SIZES:** XS, S, M, L, XL, 2XL



**KIDS / FZ9331**

**SIZES:** XS, S, M, L, XL



# NEW NIKE DRI-FIT CHALLENGE VI JERSEY SS

M • HV8141 W • HV8145 K • HV8148

- 1 Direct Embroidery Swoosh**  
Swoosh execution is embroidered directly onto the garment. The garment will also accept Heat Transfer and Screen Prints.
- 2 Recycled Materials**  
This garment is made with 100% recycled materials.
- 3 All Over Print**  
The graphic print is takes inspiration from the vertical engineered language from the 26 elite kits.
- 4 Performance Fabrics**  
Dri-FIT knit fabric on the front body, back body, and sleeves wicks sweat away, while mesh side panels offer breathability where athletes need it most.
- 5 Fit For All Athletes**  
Continuing the new Women's fit, adding more space to the waist, allowing Her to be at Her best. Fit remains consistent for Men and Youth.
- 6 Print Execution**  
This will be a sublimated front panel and sleeves. It will be placed randomly on the vertical, to optimize usage of material and reduce waste, but will result in subtle variations kit to kit.



 Sustainable Materials  
[Nike.com/sustainability](https://nike.com/sustainability)

**NEW**  
**NIKE DRI-FIT CHALLENGE VI JERSEY SS**  
**\$47.00**

**FABRIC:** 100% polyester. **OFFER DATE:** 01/01/26 **END DATE:** 12/31/27

Nike Dri-FIT technology moves sweat away from skin for quicker evaporation, helping athletes stay dry and comfortable. • Mesh back provides breathability where athletes need it most. • New v-neck design with updated ribbing on collar and sleeves. • All-over print is randomly placed to reduce waste, resulting in variations from jersey to jersey.

- |                                |                                   |                                |
|--------------------------------|-----------------------------------|--------------------------------|
| <b>010</b> Black/(White)       | <b>012</b> Wolf Grey/(Black)      | <b>100</b> White/(Black)       |
| <b>341</b> Gorge Green/(White) | <b>419</b> College Navy/(White)   | <b>448</b> Valor Blue/(White)  |
| <b>480</b> Game Royal/(White)  | <b>657</b> University Red/(White) | <b>692</b> Team Maroon/(White) |
| <b>702</b> Volt/(Black)        | <b>891</b> Team Orange/(Black)    |                                |

**FIT DETAILS:**

**MENS** • Slim fit intent for a tailored look and feel.

**WOMENS** • Updated women's fit adds more space to the waist.

**KIDS** • Not too tight or overly baggy, this jersey is made with the classic Nike fit your athletes know and love.



**MENS / HV8141**

**SIZES:** XS, S, M, L, XL, 2XL, 3XL



**WOMENS / HV8145**

**SIZES:** XS, S, M, L, X, 2XL



**KIDS / HV8148**

**SIZES:** XS, S, M, L, XL



Sustainable Materials

# NIKE DRI-FIT PRECISION VII JERSEY

M • FZ9332 W • FZ9334 K • FZ9336

- 1 Direct Embroidery Swoosh**  
Swoosh execution is embroidered directly onto the garment. The garment will also accept Heat Transfer and Screen Prints.
- 2 All Over Print**  
The graphic print is shared from the Champions League 24/25 prematch graphic, clashing images of classic sculpture with a D.I.Y zine aesthetic, a rebel celebration of the Nike Goddess.
- 3 Recycled Materials**  
This garment is made with 100% recycled materials.
- 4 Performance Fabrics**  
Dri-FIT knit fabric on the front body, back body, and sleeves wicks sweat away, while mesh side panels offer breathability where athletes need it most.
- 5 Fit For All Athletes**  
Continuing the new Women's fit, adding more space to the waist, allowing Her to be at Her best. Fit remains consistent for Men and Kids.
- 6 Print Execution**  
This will be a sublimated front panel and sleeves. It will be placed randomly on the vertical, to optimize usage of material and reduce waste, but will result in subtle variations kit to kit.



**NIKE DRI-FIT PRECISION VII JERSEY SS US**  
**\$45.00**

**FABRIC:** 100% polyester. **OFFER DATE:** 01/01/25 **END DATE:** 12/31/26

Let your players stand-out in the Nike Precision VII Jersey. Dri-FIT technology pairs with breathable mesh in a slim, streamlined fit to help keep players dry and cool. All-over print is inspired by clashing images of a classic sculpture of the Nike Goddess. This product is made with 100% recycled polyester fibers.

- |  |  |
|--|--|
| <b>010</b> Black/Anthracite/(White)          | <b>100</b> White/Pure Platinum/(Black)         |
| <b>302</b> Pine Green/(White)                | <b>410</b> Midnight Navy/Dark Obsidian/(White) |
| <b>412</b> University Blue/Coast/(White)     | <b>448</b> Valor Blue/Coast/(White)            |
| <b>463</b> Sport Royal/Royal Blue/(White)    | <b>657</b> University Red/(White)              |
| <b>677</b> Team Red/Night Maroon/(White)     | <b>692</b> Team Maroon/Night Maroon/(White)    |
| <b>702</b> Volt/Black/(White)                | <b>719</b> Tour Yellow/University Gold/(Black) |
| <b>819</b> Safety Orange/Team Orange/(Black) |  |



**MENS / FZ9332**

**SIZES:** XS, S, M, L, XL, 2XL, 3XL



**WOMENS / FZ9334**

**SIZES:** XS, S, M, L, XL, 2XL



**KIDS / FZ9336**

**SIZES:** XS, S, M, L, XL



Sustainable Materials

# NEW NIKE DRI-FIT TROPHY VI JERSEY SS

M • HV8151 W • HV8155 K • HV8158

- 1 Direct Embroidery Swoosh**  
Swoosh execution is embroidered directly onto the garment. The garment will also accept Heat Transfer and Screen Prints.
- 2 Recycled Materials**  
This garment is made with 100% recycled materials.
- 3 1-1 Rib At Cuffs & Raglan Sleeve Construction**  
Provides classic sport look with the ability to color block.
- 4 Performance Fabrics**  
Dri-FIT knit fabric on the front body, back body, and sleeves wicks sweat away, while mesh side panels offer breathability where athletes need it most.
- 5 Fit For All Athletes**  
Continuing the new Women's fit, adding more space to the waist, allowing Her to be at Her best. Fit remains consistent for Men and Youth.



 Sustainable Materials  
[Nike.com/sustainability](https://nike.com/sustainability)

**NEW**  
**NIKE DRI-FIT TROPHY VI JERSEY SS**  
**\$40.00**

**FABRIC:** 100% polyester. **OFFER DATE:** 01/01/26 **END DATE:** 12/31/28

Nike Dri-FIT technology moves sweat away from skin for quicker evaporation, helping athletes stay dry and comfortable. • Mesh back provides breathability where athletes need it most. • Updated raglan sleeve and v-neck design provides the ability to color block.

- |   |  |
|---|--|
| <b>010</b> Black/White/(White)                | <b>101</b> White/Wolf Grey/(Black)             |
| <b>341</b> Gorge Green/Pine Green/(White)     | <b>354</b> Hyper Turq/Chlorine Blue/(Black)    |
| <b>419</b> College Navy/Photo Blue/(White)    | <b>448</b> Valor Blue/College Navy/(White)     |
| <b>480</b> Game Royal/College Navy/(White)    | <b>547</b> Court Purple/Black/(White)          |
| <b>658</b> University Red/Team Maroon/(White) | <b>739</b> University Gold/Tour Yellow/(Black) |
| <b>891</b> Team Orange/Safety Orange/(Black)  |  |

**FIT DETAILS:**

**MENS** • Slim fit intent for a tailored look and feel.

**WOMENS** • Updated women's fit adds more space to the waist.

**KIDS** • Not too tight or overly baggy, this jersey is made with the classic Nike fit your athletes know and love.



**MENS / HV8151**

**SIZES:** XS, S, M, L, XL, 2XL, 3XL



**WOMENS / HV8155**

**SIZES:** XS, S, M, L, X, 2XL



**KIDS / HV8158**

**SIZES:** XS, S, M, L, XL



Sustainable Materials

# NIKE DRI-FIT STRIPED DIVISION V JERSEY

M • FZ9337 W • FZ9339 K • FZ9341

- 1 Direct Embroidery Swoosh**  
Swoosh execution is embroidered directly onto the garment. The garment will also accept Heat Transfer and Screen Prints.
- 2 Recycled Materials**  
This garment is made with 100% recycled materials.
- 3 Stripe Pattern**  
A staple of football graphic heritage, an update to the classic vertical stripe kit, with slightly wider stripes.
- 4 Performance Fabrics**  
The front body, sleeves and lower back are constructed with a Dri-FIT knit combined with a mesh jacquard to offer additional breathability. A mesh upper back panel adds breathability where athletes need it most.
- 5 Fit For All Athletes**  
Continuing the new Women's fit, adding more space to the waist, allowing Her to be at Her best. Fit remains consistent for Men and Kids.



 Sustainable Materials  
[Nike.com/sustainability](https://www.nike.com/sustainability)

**NIKE STRIPED DIVISION V JERSEY SS US**

**\$37.00**

**FABRIC:** 100% polyester. **OFFER DATE:** 01/01/25 **END DATE:** 12/31/27

An updated knit construction works with Dri-FIT technology for optimal breathability and comfort. The additional mesh back panel increases airflow, helping your players keep cool as the game heats up. This product is made with 100% recycled polyester fibers.

- |   |  |  |
|---|--|--|
| <b>010</b> Black/Anthracite/(White)     | <b>100</b> White/Black/(White)           | <b>102</b> White/University Blue/(Black) |
| <b>105</b> White/Midnight Navy/(White)  | <b>302</b> Pine Green/Black/(White)      | <b>463</b> Royal Blue/Black/(White)      |
| <b>657</b> University Red/Black/(White) | <b>739</b> University Gold/Black/(White) |  |



**MENS / FZ9337**

**SIZES:** XS, S, M, L, XL, 2XL, 3XL **BODY WIDTH:** 21.25", **BODY LENGTH:** 29.75" (SIZE LARGE)



**WOMENS / FZ9339**

**SIZES:** XS, S, M, L, XL, 2XL **BODY WIDTH:** 18.5", **BODY LENGTH:** 26.75" (SIZE MEDIUM)



**KIDS / FZ9341**

**SIZES:** XS, S, M, L, XL

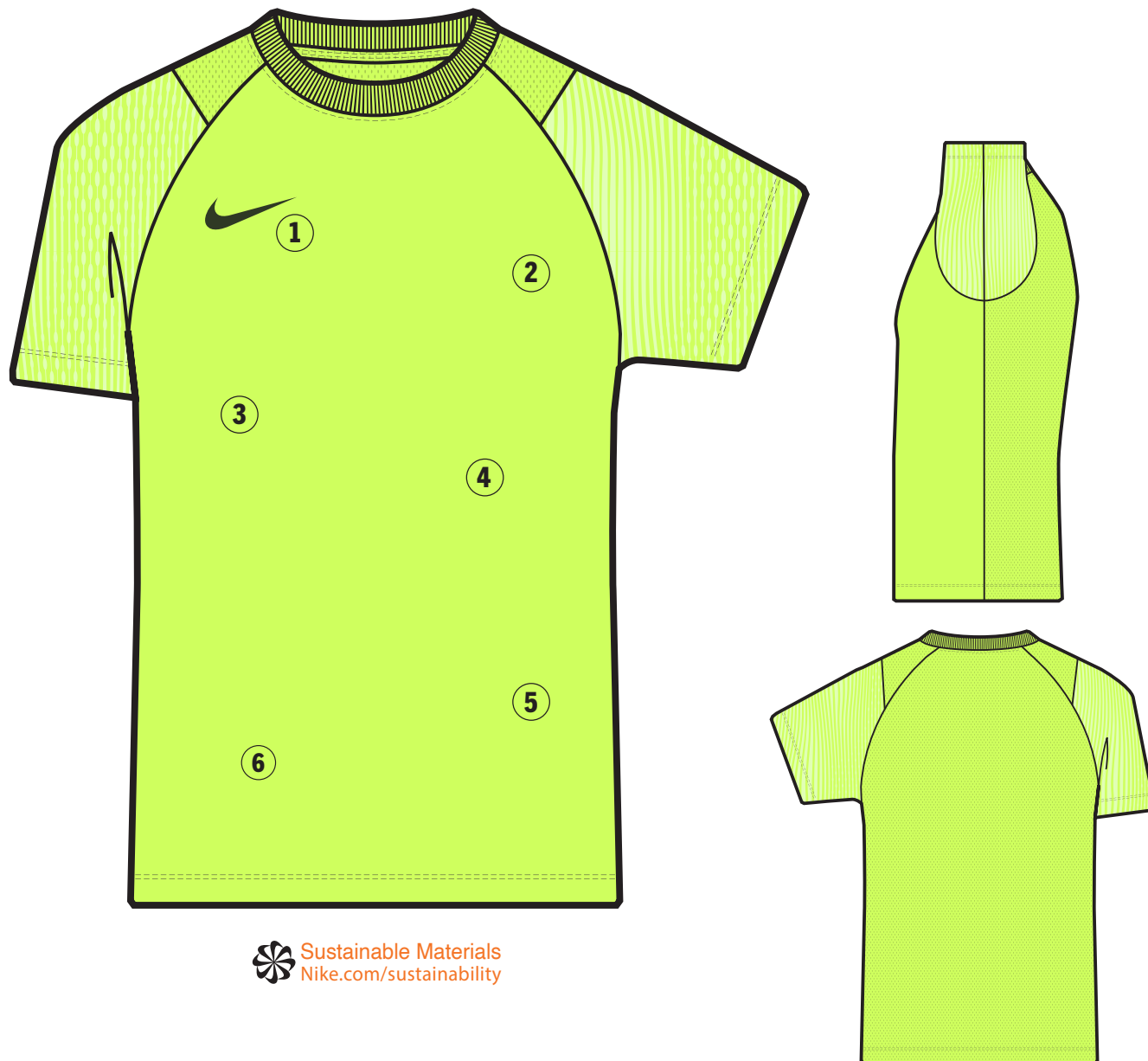


Sustainable Materials

# NEW NIKE DRI-FIT ACADEMY II JERSEY SS

M • HV8160 W • HV8164 K • HV8168

- 1 Direct Embroidery Swoosh**  
Swoosh execution is embroidered directly onto the garment. The garment will also accept Heat Transfer and Screen Prints.
- 2 Recycled Materials**  
This garment is made with 100% recycled materials.
- 3 All Over Print**  
The graphic print is shared from the engineered knit language from the elite 26 kits.
- 4 Performance Fabrics**  
Dri-FIT knit fabric on the front body, back body, and sleeves wicks sweat away, while mesh side panels offer breathability where athletes need it most.
- 5 Fit For All Athletes**  
Continuing the new Women's fit, adding more space to the waist, allowing Her to be at Her best. Fit remains consistent for Men and Youth.
- 6 Print Execution**  
This will be a sublimated at the sleeves. It will be placed randomly on the vertical, to optimize usage of material and reduce waste, but will result in subtle variations kit to kit.



 Sustainable Materials  
[Nike.com/sustainability](https://nike.com/sustainability)

**NEW**  
**NIKE DRI-FIT ACADEMY II JERSEY SS**  
**\$37.00**

**FABRIC:** 100% polyester. **OFFER DATE:** 01/01/26 **END DATE:** 12/31/29

Nike Dri-FIT technology moves sweat away from skin for quicker evaporation, helping athletes stay dry and comfortable. • Mesh back provides breathability where athletes need it most. • Sleeve print is randomly placed to reduce waste, resulting in variations from jersey to jersey.

- |  |  |
|--|--|
| <b>010</b> Black/Anthracite/(White)              | <b>012</b> Wolf Grey/Neutral Grey/(Black)        |
| <b>105</b> White/White/(Black)                   | <b>341</b> Gorge Green/Pine Green/(White)        |
| <b>419</b> College Navy/Mystic Navy/(White)      | <b>480</b> Game Royal/Royal Blue/(White)         |
| <b>547</b> Court Purple/Varsity Purple/(White)   | <b>657</b> University Red/University Red/(White) |
| <b>692</b> Team Maroon/University Red/(White)    | <b>702</b> Volt/Barely Volt/(Black)              |
| <b>739</b> University Gold/Yellow Strike/(Black) |  |

**FIT DETAILS:**

**MENS** • Slim fit intent for a tailored look and feel.

**WOMENS** • Updated women's fit adds more space to the waist.

**KIDS** • Not too tight or overly baggy, this jersey is made with the classic Nike fit your athletes know and love.



**MENS / HV8160**  
**SIZES:** XS, S, M, L, XL, 2XL, 3XL, 4XL



**WOMENS / HV8164**  
**SIZES:** XS, S, M, L, XL, 2XL, 3XL



**KIDS / HV8168**  
**SIZES:** XS, S, M, L, XL



**NIKE DRI-FIT PARK DERBY IV JERSEY SS US**  
**\$32.00**

FABRIC: 100% polyester. OFFER DATE: 01/01/24 END DATE: 12/31/26

Help your teams look and play their best in the Nike Dri-FIT Park Derby IV Jersey. Mesh on the back and underarm panels offer breathability where athletes need it most. Body and sleeves are a Nike Dri-FIT knit fabric that moves sweat away to help keep players dry. This top is made with 100% recycled material. Side panel construction uses a more efficient pattern to help reduce material waste. Slim fit for a tailored feel.

- |   |  |                                     |
|---|--|-------------------------------------|
| <b>010</b> Black/White/(White)          | <b>012</b> Wolf Grey/Volt/(Black)        | <b>100</b> White/Wolf Grey/(Black)  |
| <b>419</b> College Navy/White/(White)   | <b>448</b> Valor Blue/White/(White)      | <b>480</b> Game Royal/White/(White) |
| <b>657</b> University Red/White/(White) | <b>739</b> University Gold/White/(White) |                                     |



**MENS / FD7432**

SIZES: XS, S, M, L, XL, 2XL, 3XL



**WOMENS / FD7437**

SIZES: XS, S, M, L, XL, 2XL



**KIDS / FD7439**

SIZES: XS, S, M, L, XL



Sustainable Materials

**NIKE DRI-FIT TIEMPO PREMIER II JERSEY LS US**  
**\$32.00**

FABRIC: 100% polyester. OFFER DATE: 01/01/22 END DATE: 12/31/26

The Nike Dri-FIT Tiempo Premier II Jersey brings you the cool performance of sweat-wicking fabric and a mesh back panel kick in when the game heats up.

- 010 Black/White/(White)
- 100 White/White/(Black)
- 419 College Navy/White/(White)
- 480 Game Royal/White/(White)
- 657 University Red/White/(White)



**MENS / DH8046**

SIZES: S, M, L, XL, 2XL



**WOMENS / DH8236**

SIZES: XS, S, M, L, XL



**KIDS / DH8407**

SIZES: XS, S, M, L, XL



**NIKE DRI-FIT TIEMPO PREMIER II JERSEY SS US**  
**\$27.00**

FABRIC: 100% polyester. OFFER DATE: 01/01/22 END DATE: 12/31/26

The Nike Dri-FIT Tiempo Premier II Jersey brings you the cool performance of sweat-wicking fabric and a mesh back panel kick in when the game heats up.

- |   |                                       |                                     |
|---|---------------------------------------|-------------------------------------|
| <b>010</b> Black/White/(White)          | <b>012</b> Wolf Grey/Black/(Black)    | <b>100</b> White/White/(Black)      |
| <b>341</b> Gorge Green/White/(White)    | <b>419</b> College Navy/White/(White) | <b>448</b> Valor Blue/White/(White) |
| <b>480</b> Game Royal/White/(White)     | <b>547</b> Court Purple/White/(White) | <b>616</b> Vivid Pink/Black/(Black) |
| <b>657</b> University Red/White/(White) | <b>692</b> Team Maroon/White/(White)  | <b>702</b> Volt/Black/(Black)       |
| <b>891</b> Team Orange/Black/(Black)    |                                       |                                     |



**MENS / DH8044**

SIZES: S, M, L, XL, 2XL



**WOMENS / DH8235**

SIZES: XS, S, M, L, XL



**KIDS / DH8390**

SIZES: XS, S, M, L, XL



Sustainable Materials

# NEW NIKE DRI-FIT PARK VIII JERSEY SS

M • HV8185 W • HV8186 K • HV8188

- 1 Direct Embroidery Swoosh**  
Swoosh execution is embroidered directly onto the garment. The garment will also accept Heat Transfer and Screen Prints.
- 2 Recycled Materials**  
This garment is made with 100% recycled materials.
- 3 Raglan Sleeves**  
Updated sleeve construction from the prior version of the Park jersey.
- 4 Performance Fabrics**  
Dri-FIT knit fabric on the front body, back body, and sleeves wicks sweat away, while mesh side panels offer breathability where athletes need it most.
- 5 Fit For All Athletes**  
Continuing the new Women's fit, adding more space to the waist, allowing Her to be at Her best. Fit remains consistent for Men and Youth.



 Sustainable Materials  
[Nike.com/sustainability](https://nike.com/sustainability)

**NEW**  
**NIKE DRI-FIT PARK VIII JERSEY SS US**  
**\$22.00**

**FABRIC:** 100% polyester. **OFFER DATE:** 01/01/26 **END DATE:** 12/31/31

Nike Dri-FIT technology moves sweat away from skin for quicker evaporation, helping athletes stay dry and comfortable. • Mesh back provides breathability where athletes need it most. • New raglan sleeve construction updated from the prior Park jersey.

- |                                |                                    |                                   |
|--------------------------------|------------------------------------|-----------------------------------|
| <b>010</b> Black/(White)       | <b>012</b> Wolf Grey/(Black)       | <b>100</b> White/(Black)          |
| <b>341</b> Gorge Green/(White) | <b>354</b> Hyper Turq/(Black)      | <b>419</b> College Navy/(White)   |
| <b>448</b> Valor Blue/(White)  | <b>480</b> Game Royal/(White)      | <b>547</b> Court Purple/(White)   |
| <b>616</b> Vivid Pink/(Black)  | <b>635</b> Bright Crimson/(Black)  | <b>657</b> University Red/(White) |
| <b>692</b> Team Maroon/(White) | <b>702</b> Volt/(Black)            | <b>719</b> Tour Yellow/(Black)    |
| <b>729</b> Jersey Gold/(Black) | <b>739</b> University Gold/(Black) | <b>891</b> Team Orange/(Black)    |

**FIT DETAILS:**

**MENS** • Slim fit intent for a tailored look and feel.

**WOMENS** • Updated women's fit adds more space to the waist.

**KIDS** • Not too tight or overly baggy, this jersey is made with the classic Nike fit your athletes know and love.



**MENS / HV8185**

**SIZES:** XS, S, M, L, XL, 2XL, 3XL



**WOMENS / HV8186**

**SIZES:** XS, S, M, L, X, 2XL



**KIDS / HV8188**

**SIZES:** XS, S, M, L, XL



Sustainable Materials

**NIKE DRI-FIT WOVEN VENOM SHORT IV US**

**\$42.00**

**FABRIC:** Body: 87% polyester/13% spandex. Mesh: 100% polyester.  
**OFFER DATE:** 01/01/24 **END DATE:** 12/31/26

The Nike Dri-FIT Venom IV Shorts are designed for soccer's rising stars. Made with Nike Dri-FIT woven fabric, they wick sweat away from the body with four-way stretch properties for increased range of motion. Mesh inner gusset helps to increase breathability. These shorts are made with at least 75% recycled materials. Side panel construction uses a more efficient pattern to help reduce material waste. Slim fit for a tailored look and feel.

- |                                      |  |   |
|--------------------------------------|--|---|
| <b>010</b> Black/White/(White)       | <b>012</b> Wolf Grey/Black/(Black)       | <b>100</b> White/Black/(Black)          |
| <b>302</b> Pine Green/White/(White)  | <b>419</b> College Navy/White/(White)    | <b>448</b> Valor Blue/White/(White)     |
| <b>480</b> Game Royal/White/(White)  | <b>547</b> Court Purple/White/(White)    | <b>657</b> University Red/White/(White) |
| <b>692</b> Team Maroon/White/(White) | <b>739</b> University Gold/Black/(Black) |   |



**MENS / FD7442**

**SIZES:** XS, S, M, L, XL, 2XL, 3XL, ST, MT, LT, XLT, 2XLT, 3XLT **INSEAM LENGTH:** 7.75"



**WOMENS / FD7471**

**SIZES:** XS, S, M, L, XL, 2XL, XST, ST, MT, LT, XLT, 2XLT **INSEAM LENGTH:** 4.5"



**KIDS / FD7473**

**SIZES:** XS, S, M, L, XL **INSEAM LENGTH:** 7" (SIZE MEDIUM)



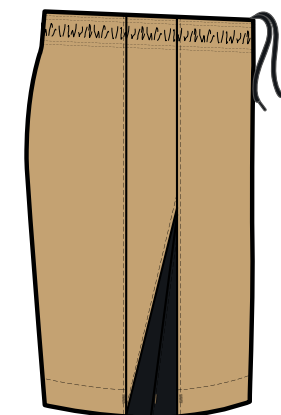
Sustainable Materials

# NEW NIKE T90 SHORT

M • IQ8094 W • IQ8098 K • IQ8100

**1 Recycled Materials**  
This garment is made with 99% recycled materials through Mechanically Recycled method from PET bottles.

**2 Performance Fabrics**  
Dri-FIT knit fabric on the main body wicks sweat away, while mesh side panels offer breathability where athletes need it most.



 Sustainable Materials  
[Nike.com/sustainability](https://www.nike.com/sustainability)

**NEW**  
**NIKE T90 SHORT**  
**\$40.00**

**FABRIC:** 100% polyester. **OFFER DATE:** 04/01/26 **END DATE:** 12/31/27

Designed to perform through all 90 minutes of a match, the Total 90 collection became one of the iconic kits of the 2000s thanks to its curving lines, asymmetric designs and mixed materials. • Nike Dri-FIT technology moves sweat away from skin for quicker evaporation, helping athletes stay dry and comfortable. • Lightweight knit fabric has a soft, smooth feel. • Elastic waistband with drawcord ensures a snug and secure fit. • Men's and Kids slim fit intent for a tailored look and feel. • Women's not too tight or overly baggy, this top is made with the classic Nike fit your athletes know and love.

- |                                   |                                |                                |
|-----------------------------------|--------------------------------|--------------------------------|
| <b>010</b> Black/(White)          | <b>100</b> White/(Wolf Grey)   | <b>341</b> Gorge Green/(White) |
| <b>419</b> College Navy/(White)   | <b>448</b> Valor Blue/(White)  | <b>480</b> Game Royal/(White)  |
| <b>657</b> University Red/(White) | <b>729</b> Jersey Gold/(Black) | <b>891</b> Team Orange/(White) |



**MENS / IQ8094**  
**SIZES:** XS, S, M, L, XL, 2XL, 3XL



**WOMENS / IQ8098**  
**SIZES:** XS, S, M, L, XL



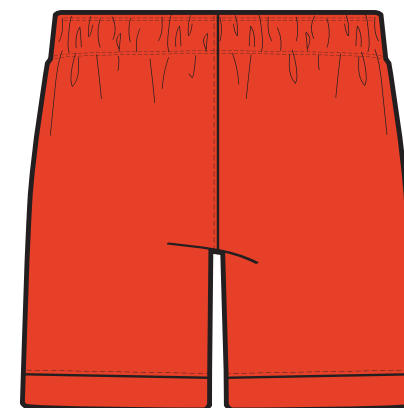
**KIDS / IQ8100**  
**SIZES:** XS, S, M, L, XL



# NEW NIKE DRI-FIT LASER VI SHORT W

M • HV8252 W • HV8253 K • HV8255

- 1 Waistband Construction**  
Classic encased elastic waistband construction with internal drawcord.
- 2 Recycled Materials**  
This garment is made with 100% recycled materials.
- 3 Performance Fabrics**  
Dri-FIT woven fabric construction on the front and back to help wick sweat away from the body.
- 4 Direct Embroidery Swoosh**  
Swoosh execution is embroidered directly onto the garment.
- 5 Fit For All Athletes**  
The Men's inseam is 7.5", Women's inseam is 5.5", and the Youth inseam grades by size from 7" for a Medium.
- 6 Side Vents At Hem**  
Promotes improved mobility.



 Sustainable Materials  
[Nike.com/sustainability](https://nike.com/sustainability)



**NEW**  
**NIKE DRI-FIT LASER VI SHORT W US**  
**\$32.00**

**FABRIC:** 100% polyester. **OFFER DATE:** 01/01/26 **END DATE:** 12/31/28

Nike Dri-FIT technology moves sweat away from skin for quicker evaporation, helping athletes stay dry and comfortable. •Elastic waistband with drawcord ensures a snug and secure fit. •Side vents at hem helps improve mobility. •The new design gives a more classic sport look with an option of contrast color blocking at the hem.

- |                                |                                    |                                   |
|--------------------------------|------------------------------------|-----------------------------------|
| <b>010</b> Black/(White)       | <b>012</b> Wolf Grey/(Black)       | <b>100</b> White/(Black)          |
| <b>341</b> Gorge Green/(White) | <b>354</b> Hyper Turq/(Black)      | <b>419</b> College Navy/(White)   |
| <b>480</b> Game Royal/(White)  | <b>616</b> Vivid Pink/(Black)      | <b>657</b> University Red/(White) |
| <b>692</b> Team Maroon/(White) | <b>739</b> University Gold/(Black) | <b>891</b> Team Orange/(Black)    |

**FIT DETAILS:**

**MENS** • Slim fit intent for a tailored look and feel.

**WOMENS** • Not too tight or overly baggy, these shorts are made with the classic Nike fit your athletes know and love.

**KIDS** • Not too tight or overly baggy, these shorts are made with the classic Nike fit your athletes know and love.



**MENS / HV8252**

**SIZES:** XS, S, M, L, XL, 2XL, 3XL **INSEAM LENGTH:** 7.5"



**WOMENS / HV8253**

**SIZES:** XS, S, M, L, XL **INSEAM LENGTH:** 5.5"



**KIDS / HV8255**

**SIZES:** XS, S, M, L, XL **INSEAM LENGTH:** 7" (SIZE MEDIUM)



Sustainable Materials

**NIKE DRI-FIT LEAGUE KNIT III SHORT US**

**\$29.00**

**FABRIC:** 100% polyester. **OFFER DATE:** 01/01/23 **END DATE:** 12/31/26

Round out your game-day uniform with the Nike League Shorts, made from lightweight sweat-wicking fabric that helps you stay dry on the field. With mesh insets and a slim, streamlined fit, they keep the air flowing and distractions low so you can focus on the ball. Embroidered Swoosh design trademark. Elastic waistband with drawcord.

- |  |                                      |   |
|--|--------------------------------------|---|
| <b>010</b> Black/White/(White)           | <b>012</b> Wolf Grey/Black/(Black)   | <b>100</b> White/Black/(Black)          |
| <b>341</b> Gorge Green/White/(White)     | <b>354</b> Hyper Turq/White/(White)  | <b>419</b> College Navy/White/(White)   |
| <b>448</b> Valor Blue/White/(White)      | <b>480</b> Game Royal/White/(White)  | <b>657</b> University Red/White/(White) |
| <b>739</b> University Gold/Black/(Black) | <b>891</b> Team Orange/Black/(Black) |   |



**MENS / DR0961**

**SIZES:** S, M, L, XL, 2XL **INSEAM LENGTH:** 8"



**WOMENS / DR0965**

**SIZES:** XS, S, M, L, XL **INSEAM LENGTH:** 4"



**KIDS / DR0969**

**SIZES:** XS, S, M, L, XL **INSEAM LENGTH:** 7" (SIZE MEDIUM)



Sustainable Materials

**NIKE DRI-FIT CLASSIC III KNIT SHORT US**

**\$24.00**

**FABRIC:** 100% polyester. **OFFER DATE:** 01/01/25 **END DATE:** 12/31/28

The Classic III shorts are made with Dri-FIT knit fabric and a mesh leg opening to keep players dry and moving comfortably. Elastic waistband with drawcord helps ensure a snug and secure fit through 90 minutes. This product is made with 100% recycled polyester fibers. Dye process reduces the water and energy usage by over 50%.

- |  |                                      |  |
|--|--------------------------------------|--|
| <b>010</b> Black/White/(White)           | <b>012</b> Wolf Grey/Black/(Black)   | <b>100</b> White/Black/(Black)         |
| <b>302</b> Pine Green/White/(White)      | <b>341</b> Gorge Green/White/(White) | <b>410</b> Midnight Navy/White/(White) |
| <b>412</b> University Blue/White/(White) | <b>463</b> Royal Blue/White/(White)  | <b>547</b> Court Purple/White/(White)  |
| <b>657</b> University Red/White/(White)  | <b>677</b> Team Red/White/(White)    | <b>702</b> Volt/Black/(Black)          |
| <b>739</b> University Gold/Black/(Black) |                                      |  |



**MENS / FZ9368**

**SIZES:** S, M, L, XL, 2XL **INSEAM LENGTH:** 8.25"



**WOMENS / FZ9371**

**SIZES:** S, M, L, XL, 2XL **INSEAM LENGTH:** 4"



**KIDS / FZ9374**

**SIZES:** XS, S, M, L, XL **INSEAM LENGTH:** 7" (SIZE MEDIUM)



Sustainable Materials

**NIKE DRY PARK III SHORT NB**

**\$20.00**

FABRIC: 100% polyester. OFFER DATE: 04/01/20 END DATE: 12/31/31

Dri-FIT angled side seam short (slim fit) with soft hand feel updated fit for better mobility/comfort.

- |                                |                                    |                                   |
|--------------------------------|------------------------------------|-----------------------------------|
| <b>010</b> Black/(White)       | <b>012</b> Wolf Grey/(Black)       | <b>100</b> White/(Black)          |
| <b>341</b> Gorge Green/(White) | <b>354</b> Hyper Turq/(Black)      | <b>419</b> College Navy/(White)   |
| <b>448</b> Valor Blue/(White)  | <b>480</b> Game Royal/(White)      | <b>547</b> Court Purple/(White)   |
| <b>617</b> Vivid Pink/(Black)  | <b>635</b> Bright Crimson/(Black)  | <b>657</b> University Red/(White) |
| <b>692</b> Team Maroon/(White) | <b>702</b> Volt/(Black)            | <b>719</b> Tour Yellow/(Black)    |
| <b>729</b> Jersey Gold/(Black) | <b>739</b> University Gold/(Black) | <b>891</b> Team Orange/(Black)    |



**MENS / BV6857**

SIZES: S, M, L, XL HIP WIDTH: 20.5" (SIZE LARGE), INSEAM LENGTH: 9" (ALL SIZES)



**WOMENS / BV6862**

SIZES: XS, S, M, L, XL HIP WIDTH: 21.5", INSEAM LENGTH: 3.4" (SIZE MEDIUM)



**KIDS / BV6866**

SIZES: XS, S, M, L, XL HIP WIDTH: 17.5", INSEAM LENGTH: 7" (SIZE MEDIUM)



Sustainable Materials

**NIKE STRIKE KH - WC22 TEAM**  
**FQ8253 \$20.00**

Sold in prepacks of 6.

SIZES: XS, S, M, L, XL FABRIC: 100% textile.  
 OFFER DATE: 04/01/24

- |   |   |
|---|---|
| <b>010</b> Black/Anthracite/(White)                   | <b>100</b> White/(Black)                    |
| <b>302</b> Pine Green/Gorge Green/Black/(White)       | <b>329</b> Green Spark/(Black)              |
| <b>354</b> Hyper Turq/(Black)                         | <b>410</b> Midnight Navy/(White)            |
| <b>412</b> University Blue/Italy Blue/(Midnight Navy) | <b>463</b> Royal Blue/Midnight Navy/(White) |
| <b>477</b> Team Royal/(White)                         | <b>510</b> Hyper Grape/Black/(Jersey Gold)  |
| <b>635</b> Bright Crimson/(Black)                     | <b>639</b> Hyper Pink/(Black)               |
| <b>657</b> University Red/Gym Red/(White)             | <b>702</b> Volt/(Black)                     |
| <b>719</b> Tour Yellow/University Gold/(Black)        | <b>891</b> Team Orange/(Black)              |



**NIKE ACADEMY OTC - TEAM 132**  
**SX5728 \$12.00**

Sold in prepacks of 6.

SIZES: XS, S, M, L, XL FABRIC: 100% textile.

The Nike Classic 2 Sock is designed with a dynamic arch and lightweight cushioning for a supportive fit and feel during play. • Dri-FIT technology helps keep feet dry and comfortable. • Cushioning in high-wear areas helps absorb impact. • Dynamic arch provides a supportive fit and feel. • Anatomical left and right socks are designed for a natural fit.

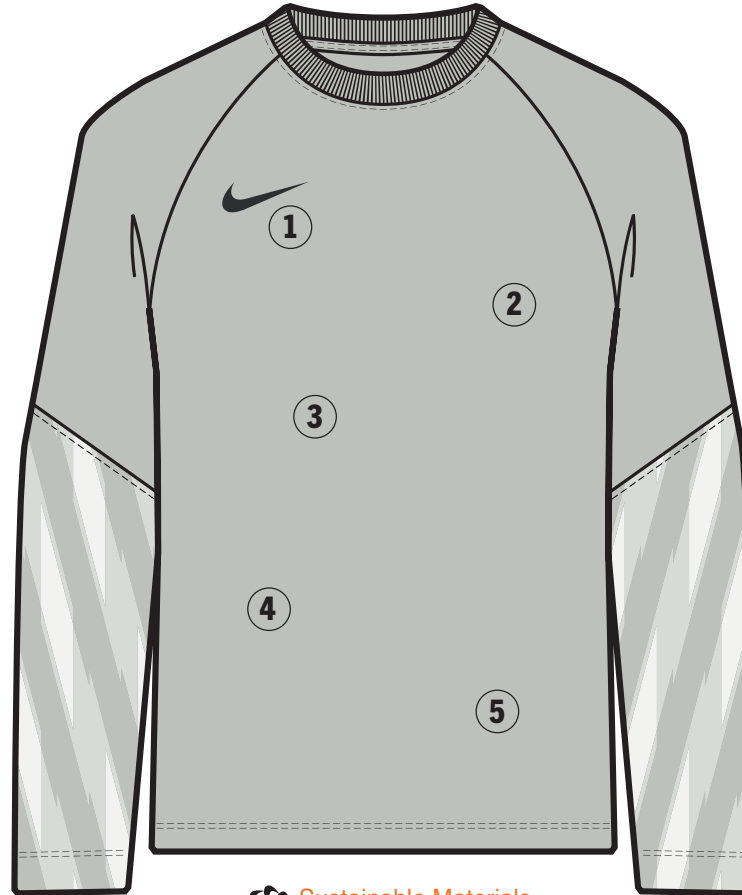
- |                                    |                                |                                   |
|------------------------------------|--------------------------------|-----------------------------------|
| <b>010</b> Black/(White)           | <b>018</b> Wolf Grey/(Black)   | <b>100</b> White/(Black)          |
| <b>302</b> Pine Green/(White)      | <b>303</b> Hyper Turq/(Black)  | <b>323</b> Gorge Green/(White)    |
| <b>410</b> College Navy/(White)    | <b>448</b> Valor Blue/(White)  | <b>460</b> Game Royal/(White)     |
| <b>545</b> Court Purple/(White)    | <b>616</b> Vivid Pink/(Black)  | <b>648</b> University Red/(White) |
| <b>677</b> Team Maroon/(White)     | <b>702</b> Volt/(Black)        | <b>719</b> Tour Yellow/(Black)    |
| <b>739</b> University Gold/(Black) | <b>729</b> Jersey Gold/(Black) | <b>817</b> Team Orange/(White)    |
| <b>891</b> Team Orange/(Black)     |                                |                                   |



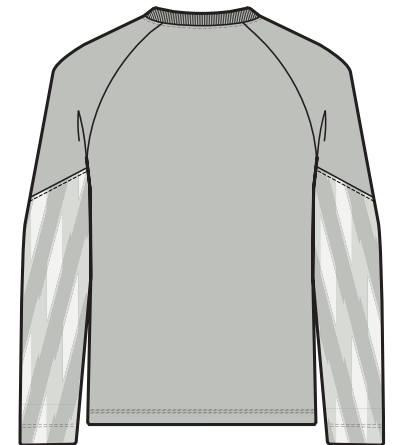
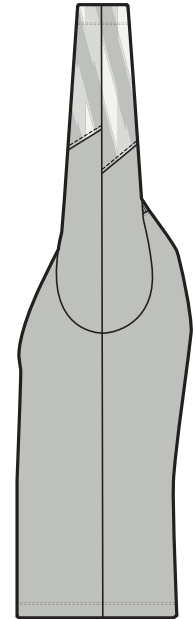
# NEW NIKE DRI-FIT PARK V GK JERSEY LS

M • HV8314 W • HV8316 K • HV8318

- 1 Direct Embroidery Swoosh**  
Swoosh execution is embroidered directly onto the garment. The garment will also accept Heat Transfer and Screen Prints.
- 2 Recycled Materials**  
This garment is made with 100% recycled materials.
- 3 Print Execution**  
This will be a sublimated on the lower half of the sleeves. It will be placed randomly on the vertical, to optimize usage of material and reduce waste, but will result in subtle variations kit to kit.
- 4 Performance Fabrics**  
Dri-FIT fabric on the main body wicks away sweat and eliminates on-field distractions.
- 5 Fit For All Athletes**  
Continuing the new Women's fit, adding more space to the waist, allowing Her to be at Her best. Fit remains consistent for Men and Youth.



 Sustainable Materials  
[Nike.com/sustainability](https://nike.com/sustainability)



**NEW**  
**NIKE DRI-FIT PARK V GK JERSEY LS**  
**\$42.00**

FABRIC: 100% polyester. OFFER DATE: 01/01/26 END DATE: 12/31/31

Nike Dri-FIT technology moves sweat away from skin for quicker evaporation, helping athletes stay dry and comfortable. • Updated raglan sleeve construction from the prior version. • Sleeve print is randomly placed to reduce waste, resulting in variations from jersey to jersey.

- 010 Black/(White)
- 097 Grey Fog/(Black)
- 507 Wild Grape/(White)
- 645 Hyper Pink/(White)

**FIT DETAILS:**

**MENS** • Slim fit intent for a tailored look and feel.

**WOMENS** • Updated women's fit adds more space to the waist.

**KIDS** • Not too tight or overly baggy, this jersey is made with the classic Nike fit your athletes know and love.



**MENS / HV8314**

SIZES: XS, S, M, L, XL, 2XL, 3XL



**WOMENS / HV8316**

SIZES: XS, S, M, L, X, 2XL



**KIDS / HV8318**

SIZES: XS, S, M, L, XL



Sustainable Materials

**NIKE DRY PARK III SHORT NB**

**\$20.00**

FABRIC: 100% polyester. OFFER DATE: 04/01/20 END DATE: 12/31/31

Dri-FIT angled side seam short (slim fit) with soft hand feel updated fit for better mobility/comfort.

- 010** Black/(White)
- 012** Wolf Grey/(Black)
- 547** Court Purple/(White)
- 617** Vivid Pink/(Black)



**MENS / BV6857**

SIZES: S, M, L, XL, 2XL HIP WIDTH: 20.5" (SIZE LARGE), INSEAM LENGTH: 9" (ALL SIZES)



**WOMENS / BV6862**

SIZES: XS, S, M, L, XL HIP WIDTH: 19.7" (SIZE MEDIUM), INSEAM LENGTH: 3.4" (ALL SIZES)



**KIDS / BV6866**

SIZES: XS, S, M, L, XL HIP WIDTH: 16.9", INSEAM LENGTH: 7" (SIZE MEDIUM)



# **NEW** NIKE DRI-FIT GARDIEN VI GK JERSEY LS

M • HV8311 W • HV8312 K • HV8313

- 1 Direct Embroidery Swoosh**  
Swoosh execution is embroidered directly onto the garment. The garment will also accept Heat Transfer and Screen Prints.
- 2 Recycled Materials**  
This garment is made with 100% recycled materials.
- 3 All Over Print**  
The graphic print takes visual elements from the 26 elite GK jersey.
- 4 Performance Fabrics**  
Dri-FIT knit fabric on the main body wicks sweat away, while knit fabric sleeves add durability where Keepers need it most.
- 5 Fit For All Athletes**  
Continuing the new Women's fit, adding more space to the waist, allowing Her to be at Her best. Fit remains consistent for Men and Youth.
- 6 Print Execution**  
This will be a sublimated front and back panels and sleeves. It will be placed randomly on the vertical, to optimize usage of material and reduce waste, but will result in subtle variations kit to kit.
- 7 Signifier Language**  
A direct one to one link of the WC26 Chassis, celebrating the best athletes on the pitch.

## COMING SOON



**NEW**  
**NIKE DRI-FIT GARDIEN VI GK JERSEY LS US**  
**\$82.00**

**FABRIC:** Body: 100% polyester. Panels: 91% polyester/9% spandex.  
**OFFER DATE:** 01/01/26 **END DATE:** 12/31/27

Nike Dri-FIT technology moves sweat away from skin for quicker evaporation, helping athletes stay dry and comfortable. • Endure knit fabric on the sleeves helps add durability. • Spandex-blend panels help increase range of motion for stretch saves.

- |                               |                                  |                               |
|-------------------------------|----------------------------------|-------------------------------|
| <b>010</b> Black/(White)      | <b>329</b> Stadium Green/(White) | <b>507</b> Wild Grape/(White) |
| <b>644</b> Hyper Pink/(White) | <b>719</b> Lightening/(Black)    |                               |

**FIT DETAILS:**  
**MENS** • Slim fit intent for a tailored look and feel.  
**WOMENS** • Updated women's fit adds more space to the waist.  
**KIDS** • Not too tight or overly baggy, this jersey is made with the classic Nike fit your athletes know and love.



**MENS / HV8311**  
**SIZES:** XS, S, M, L, XL, 2XL, 3XL



**WOMENS / HV8312**  
**SIZES:** XS, S, M, L, X, 2XL



**KIDS / HV8313**  
**SIZES:** XS, S, M, L, XL



**NIKE DRY PARK III SHORT NB**

**\$20.00**

FABRIC: 100% polyester. OFFER DATE: 04/01/20 END DATE: 12/31/31

Dri-FIT angled side seam short (slim fit) with soft hand feel updated fit for better mobility/comfort.

- 010** Black/(White)
- 341** Gorge Green/(White)
- 547** Court Purple/(White)
- 617** Vivid Pink/(Black)
- 719** Tour Yellow/(Black)



**MENS / BV6857**

SIZES: S, M, L, XL, 2XL HIP WIDTH: 20.5" (SIZE LARGE), INSEAM LENGTH: 9" (ALL SIZES)



**WOMENS / BV6862**

SIZES: XS, S, M, L, XL HIP WIDTH: 19.7" (SIZE MEDIUM), INSEAM LENGTH: 3.4" (ALL SIZES)



**KIDS / BV6866**

SIZES: XS, S, M, L, XL HIP WIDTH: 16.9", INSEAM LENGTH: 7" (SIZE MEDIUM)



**NIKE DRI-FIT PAD GARDIEN I GOALKEEPER  
COMPRESSION TIGHT  
\$72.00**

FABRIC: 100% polyester. OFFER DATE: 01/01/22 END DATE: 12/31/27

010 Black/Black/(White)



**MENS / CV0045**

SIZES: S, M, L, XL, 2XL



**WOMENS / CV0048**

SIZES: XS, S, M, L, XL



**KIDS / CV0050**

SIZES: XS, S, M, L, XL



Sustainable Materials

**NIKE DRI-FIT PAD GARDIEN I GOALKEEPER  
COMPRESSION SHORT  
\$67.00**

FABRIC: 100% polyester. OFFER DATE: 01/01/22 END DATE: 12/31/27

010 Black/Black/(White)



**MENS / CVO053**

SIZES: S, M, L, XL, 2XL



**WOMENS / CVO055**

SIZES: XS, S, M, L, XL INSEAM LENGTH: 5.25" (SIZE MEDIUM)



**KIDS / CVO057**

SIZES: XS, S, M, L, XL INSEAM LENGTH: 5" (SIZE MEDIUM)



Sustainable Materials

**NEW**  
**NIKE DRI-FIT REFEREE III JERSEY SS**  
**\$80.00**

**FABRIC:** 100% polyester. **OFFER DATE:** 04/01/26 **END DATE:** 12/31/29

The Nike Dri-FIT Jersey is made with sweat-wicking fabric to help keep you cool and comfortable, and 2 large pockets offer plenty of room for pens, penalty cards, and more.

**010** Black/Black/(White)

**702** Volt/Black/(Black)



**MENS / HV8319**

**SIZES:** S, M, L, XL, 2XL



**WOMENS / HV8321**

**SIZES:** XS, S, M, L, XL, 2XL



Sustainable Materials

**NEW**  
**NIKE DRI-FIT REFEREE III SHORT**  
**\$55.00**

**FABRIC:** 100% polyester. **OFFER DATE:** 04/01/26 **END DATE:** 12/31/29

The Nike Dri-FIT Shorts are made with sweat-wicking fabric to help keep you cool and comfortable for the full 90 minutes.

**010** Black/(White)



**MENS / HV8330**

**SIZES:** S, M, L, XL, 2XL **INSEAM LENGTH:** 8.25"



**WOMENS / HV8332**

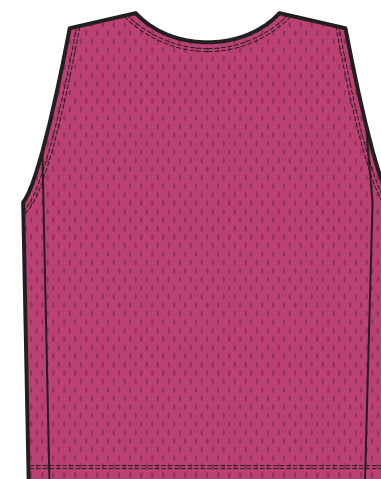
**SIZES:** XS, S, M, L, XL **INSEAM LENGTH:** 6"



# NEW NIKE DRI-FIT TRAINING BIB 26

## UNISEX • HV8429

- 1 Direct Embroidery Swoosh**  
Swoosh execution is a #7 heat transfer.
- 2 Recycled Materials**  
This garment is made with 100% recycled materials.
- 3 Performance Fabrics**  
Constructed with a Dri-FIT knit fabric, to help wick sweat away from the body.



 Sustainable Materials  
[Nike.com/sustainability](https://nike.com/sustainability)



**NEW**  
**UNISEX NIKE DRI-FIT TRAINING BIB 26**  
**\$11.00**

FABRIC: 100% polyester. OFFER DATE: 01/01/26 END DATE: 12/31/31

- |                               |                                 |                               |
|-------------------------------|---------------------------------|-------------------------------|
| <b>100</b> White/(Black)      | <b>315</b> Action Green/(Black) | <b>406</b> Photo Blue/(Black) |
| <b>616</b> Vivid Pink/(Black) | <b>702</b> Volt/(Black)         |                               |

**UNISEX / HV8429**

SIZES: XS, S, M, L, XL



**UNISEX NIKE DRY PARK 20 BIB**  
**\$11.00**

FABRIC: 100% polyester. OFFER DATE: 01/01/23 END DATE: 12/31/25

Find your focus on the field with the Nike Dri-FIT Park Training Bib. Breathable, sweat-wicking mesh helps keep you dry and cool when scrimmage heats up.

- |                               |                                 |                               |
|-------------------------------|---------------------------------|-------------------------------|
| <b>100</b> White/(Black)      | <b>313</b> Action Green/(Black) | <b>406</b> Photo Blue/(Black) |
| <b>616</b> Vivid Pink/(Black) | <b>702</b> Volt/(Black)         |                               |

**UNISEX / DV7425**

SIZES: S, L, XXL



**NIKE DRY PARK 20 BIB NOW SOLD AS SINGLE UNITS.**  
**\$11.00 PRICE REFLECTS YOUR PER UNIT COST.**



# NEW NIKE DRI-FIT STRIKE 26 TRACK JACKET K

M • HV8407 W • HV8409 K • HV8411

- 1 Heat Transfer Swoosh**  
Swoosh execution is a high density heat transfer. The garment will also accept Direct Embroidery and Screen Prints.
- 2 Recycled Materials**  
This garment is made with 100% recycled materials.
- 3 Performance Fabrics**  
Constructed with a Dri-FIT knit fabric, to help wick sweat away from the body.
- 4 Secure Storage**  
Two zippered side seam pockets offer plenty of secure storage options.
- 5 Color Blocking**  
Color blocked inserts down the exterior of the sleeves provide a classic training look.
- 6 Rib At Cuffs And Collar**  
Rib at the cuffs and collar help keep this track jacket in place.



 Sustainable Materials  
[Nike.com/sustainability](https://nike.com/sustainability)



**NEW**  
**NIKE DRI-FIT STRIKE 26 TRACK JACKET K**  
**\$85.00**

**FABRIC:** 100% polyester. **OFFER DATE:** 01/01/26 **END DATE:** 12/31/27

Nike Dri-FIT technology moves sweat away from skin for quicker evaporation, helping athletes stay dry and comfortable. • Two zippered side pockets offer plenty of secure storage options. • Lightweight knit fabric has a soft, smooth feel. • Rib at the cuffs and collar help keep this jacket in place.

- |   |   |
|---|---|
| <b>010</b> Black/Wolf Grey/(White)          | <b>329</b> Green Spark/Wolf Grey/(White)    |
| <b>410</b> Midnight Navy/Royal Blue/(White) | <b>463</b> Royal Blue/Midnight Navy/(White) |
| <b>657</b> University Red/Black/(White)     |   |

**FIT DETAILS:**

**MENS** • Slim fit intent for a tailored look and feel.

**WOMENS** • Not too tight or overly baggy, this jacket is made with the classic Nike fit your athletes know and love.

**KIDS** • Not too tight or overly baggy, this jacket is made with the classic Nike fit your athletes know and love.



CLOSE UP VIEW OF PIPING COLORS (BACK VIEW)



**MENS / HV8407**

**SIZES:** XS, S, M, L, XL, 2XL, 3XL



**WOMENS / HV8409**

**SIZES:** XS, S, M, L, X, 2XL



**KIDS / HV8411**

**SIZES:** XS, S, M, L, XL



Sustainable Materials

# NEW NIKE DRI-FIT STRIKE 26 DRILL TOP K

M • HV8373 W • HV8379 K • HV8383

- 1 Heat Transfer Swoosh**  
Swoosh execution is a high density heat transfer. The garment will also accept Direct Embroidery and Screen Prints.
- 2 Recycled Materials**  
This garment is made with 100% recycled materials.
- 3 Side Panel**  
Mesh side panels provide breathability where athletes need it most.
- 4 Signifier Language**  
A link to the WC26 Chassis signifier and piping, celebrating the best athletes on the pitch.
- 5 Performance Fabrics**  
Dri-FIT knit fabric on the main body wicks sweat away, while mesh side panels and sleeve inserts provide breathability where athletes need it most.
- 6 Fit For All Athletes**  
Continuing the new Women's fit, adding more space to the waist, allowing Her to be at Her best. Fit remains consistent for Men and Youth.



 Sustainable Materials  
[Nike.com/sustainability](https://nike.com/sustainability)



**NEW**  
**NIKE DRI-FIT STRIKE 26 DRILL TOP K**  
**\$75.00**

FABRIC: 91% polyester/9% spandex. OFFER DATE: 01/01/26 END DATE: 12/31/27

Nike Dri-FIT technology moves sweat away from skin for quicker evaporation, helping athletes stay dry and comfortable. • Mesh panels provide breathability where athletes need it most. • Lightweight knit fabric has a soft, smooth feel.

- |   |   |
|---|---|
| <b>010</b> Black/Wolf Grey/(White)          | <b>329</b> Green Spark/Wolf Grey/(White)    |
| <b>410</b> Midnight Navy/Royal Blue/(White) | <b>463</b> Royal Blue/Midnight Navy/(White) |
| <b>657</b> University Red/Black/(White)     |   |

**FIT DETAILS:**

**MENS** • Slim fit intent for a tailored look and feel.

**WOMENS** • Updated women's fit adds more space to the waist.

**KIDS** • Not too tight or overly baggy, this top is made with the classic Nike fit your athletes know and love.



CLOSE UP VIEW OF PIPING COLORS



**MENS / HV8373**

SIZES: XS, S, M, L, XL, 2XL, 3XL



**WOMENS / HV8379**

SIZES: XS, S, M, L, X, 2XL



**KIDS / HV8383**

SIZES: XS, S, M, L, XL

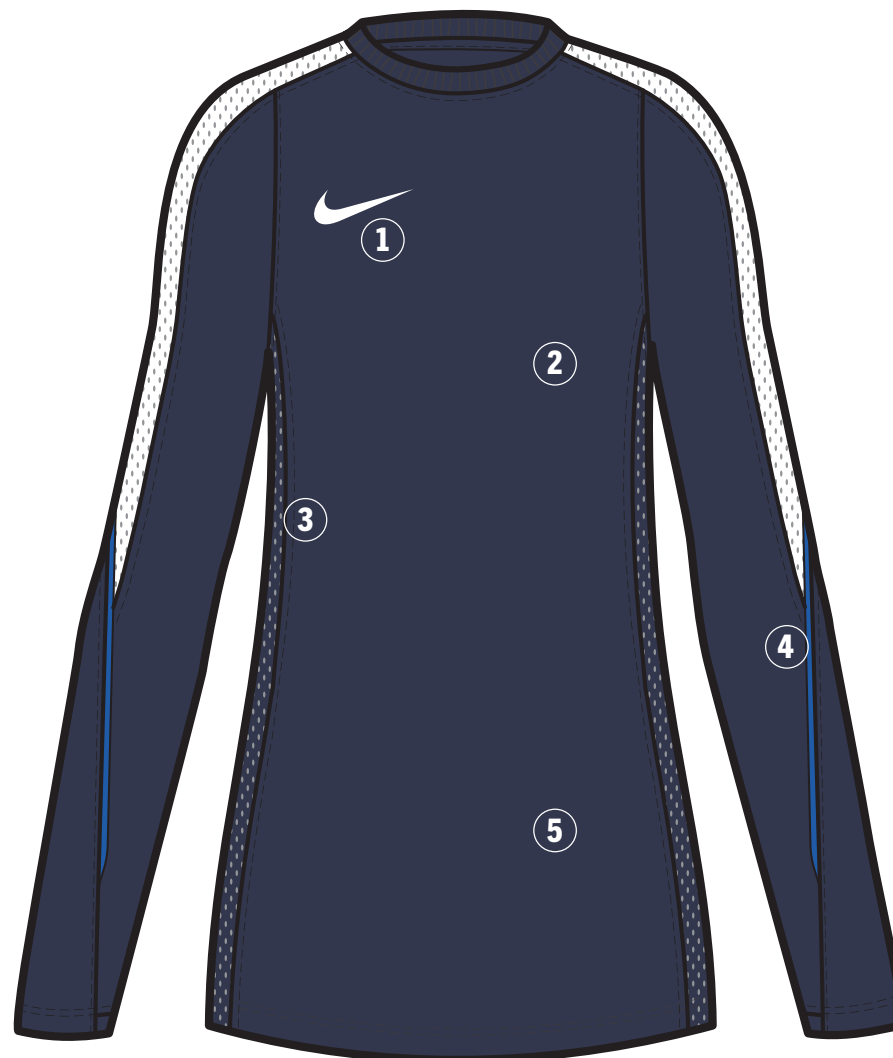


Sustainable Materials

# NEW NIKE DRI-FIT STRIKE 26 CREW TOP

## W • HV8367

- 1 Heat Transfer Swoosh**  
Swoosh execution is a high density heat transfer. The garment will also accept Direct Embroidery and Screen Prints.
- 2 Recycled Materials**  
This garment is made with 100% recycled materials.
- 3 Side Panel**  
Mesh side panels provide breathability where athletes need it most.
- 4 Signifier Language**  
A link to the WC26 Chassis signifier and piping, celebrating the best athletes on the pitch.
- 5 Performance Fabrics**  
Dri-FIT knit fabric on the main body wicks sweat away, while mesh side panels and sleeve inserts provide breathability where athletes need it most.



 Sustainable Materials  
[Nike.com/sustainability](https://nike.com/sustainability)



**NEW**  
**NIKE DRI-FIT STRIKE 26 CREW TOP K**  
**\$75.00**

FABRIC: 91% polyeste/9% spandex. OFFER DATE: 01/01/26 END DATE: 12/31/27

Nike Dri-FIT technology moves sweat away from skin for quicker evaporation, helping athletes stay dry and comfortable. •Mesh panels provide breathability where athletes need it most. •Lightweight knit fabric has a soft, smooth feel. •Updated women's fit adds more space to the waist.

- 010** Black/Wolf Grey/(White)
- 329** Green Spark/Wolf Grey/(White)
- 410** Midnight Navy/Royal Blue/(White)
- 463** Royal Blue/Midnight Navy/(White)
- 657** University Red/Black/(White)



CLOSE UP VIEW OF PIPING COLORS



**WOMENS / HV8367**

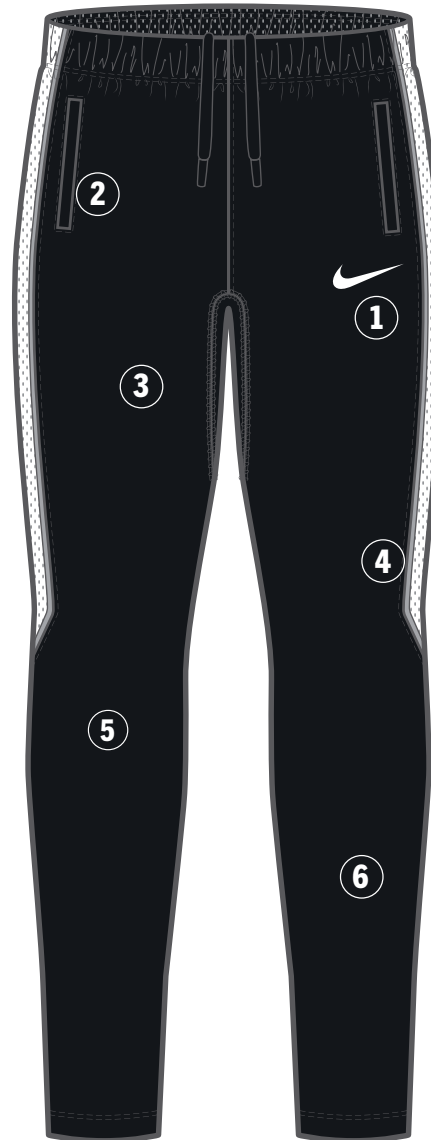
SIZES: XS, S, M, L, XL, 2XL



# NEW NIKE DRI-FIT STRIKE 26 PANT KPZ

M • HV8386 W • HV8393 K • HV8395

- 1 Heat Transfer Swoosh**  
Swoosh execution is a high density heat transfer. The garment will also accept Direct Embroidery and Screen Prints.
- 2 Secure Storage**  
Two zippered side seam pockets offer secure storage options.
- 3 Recycled Materials**  
This garment is made with 100% recycled materials.
- 4 Signifier Language**  
A link to the WC26 Chassis signifier and piping, celebrating the best athletes on the pitch.
- 5 Performance Fabrics**  
Dri-FIT knit fabric on the main body wicks sweat away, while mesh side panels and sleeve inserts provide breathability where athletes need it most.
- 6 Fit For All Athletes**  
Continuing the new Women's fit, adding more space to the waist, allowing Her to be at Her best. Fit remains consistent for Men and Youth.
- 7 Zippers**  
Zippers at the leg opening provide ease of on/off.



 Sustainable Materials  
[Nike.com/sustainability](https://nike.com/sustainability)

**NEW**  
**NIKE DRI-FIT STRIKE 26 PANT KPZ**  
**\$75.00**

**FABRIC:** Body: 91% polyester/9% spandex. Pocket Bags: 100% polyester.  
**OFFER DATE:** 01/01/26 **END DATE:** 12/31/27

Nike Dri-FIT technology moves sweat away from skin for quicker evaporation, helping athletes stay dry and comfortable. • Two zippered side pockets offer plenty of secure storage options. • Lightweight knit fabric has a soft, smooth feel. • Mesh panels provide breathability where athletes need it most. • Zippers at the leg opening provide ease of on/off over shoes.

- 010** Black/Black Mesh/White Mesh/Wolf Grey/(White)
- 410** Midnight Navy/Midnight Navy Mesh/White Mesh/Royal Blue/(White)

**FIT DETAILS:**  
**MENS** • Slim fit intent for a tailored look and feel.  
**WOMENS** • Updated women's fit adds more space to the waist.  
**KIDS** • Not too tight or overly baggy, these pants are made with the classic Nike fit your athletes know and love.



CLOSE UP VIEW OF PIPING COLORS



**MENS / HV8386**

**SIZES:** XS, S, M, L, XL, 2XL, 3XL



**WOMENS / HV8393**

**SIZES:** XS, S, M, L, X, 2XL



**KIDS / HV8395**

**SIZES:** XS, S, M, L, XL



# NEW NIKE DRI-FIT STRIKE 26 TOP SS

M • HV8339 W • HV8341 K • HV8343

- 1 Heat Transfer Swoosh**  
Swoosh execution is a high density heat transfer. The garment will also accept Direct Embroidery and Screen Prints.
- 2 Recycled Materials**  
This garment is made with 100% recycled materials.
- 3 Side Panel**  
Mesh side panels provide breathability where athletes need it most.
- 4 Signifier Language**  
A link to the WC26 Chassis signifier and piping, celebrating the best athletes on the pitch.
- 5 Performance Fabrics**  
Dri-FIT knit fabric on the main body wicks sweat away, while mesh side panels and sleeve inserts offer breathability where athletes need it most.
- 6 Fit For All Athletes**  
Continuing the new Women's fit, adding more space to the waist, allowing Her to be at Her best. Fit remains consistent for Men and Youth.



 Sustainable Materials  
[Nike.com/sustainability](https://www.nike.com/sustainability)

**NEW**  
**NIKE DRI-FIT STRIKE 26 SS TOP K**  
**\$45.00**

FABRIC: 100% polyester. OFFER DATE: 01/01/26 END DATE: 12/31/27

Nike Dri-FIT technology moves sweat away from skin for quicker evaporation, helping athletes stay dry and comfortable. • Mesh panels provide breathability where athletes need it most. • Lightweight knit fabric has a soft, smooth feel.

- 010 Black/Wolf Grey/(White)
- 329 Green Spark/Wolf Grey/(White)
- 410 Midnight Navy/Royal Blue/(White)
- 463 Royal Blue/Midnight Navy/(White)
- 657 University Red/Black/(White)

**FIT DETAILS:**  
**MENS** • Slim fit intent for a tailored look and feel.  
**WOMENS** • Updated women's fit adds more space to the waist.  
**KIDS** • Not too tight or overly baggy, this top is made with the classic Nike fit your athletes know and love.



CLOSE UP VIEW OF PIPING COLORS



**MENS / HV8339**

SIZES: XS, S, M, L, XL, 2XL, 3XL



**WOMENS / HV8341**

SIZES: XS, S, M, L, X, 2XL



**KIDS / HV8343**

SIZES: XS, S, M, L, XL



# NEW NIKE DRI-FIT STRIKE 26 SHORT KZ

M • HV8359 W • HV8363 K • HV8365

- 1 Secure Storage**  
Two zippered side seam pockets offer secure storage options.
- 2 Recycled Materials**  
This garment is made with 100% recycled materials.
- 3 Signifier Language**  
A link to the WC26 Chassis signifier and piping, celebrating the best athletes on the pitch.
- 4 Performance Fabrics**  
Dri-FIT knit fabric on the main body wicks sweat away, while mesh side panels and gussets offer breathability where athletes need it most.
- 5 Heat Transfer Swoosh**  
Swoosh execution is a high density heat transfer. The garment will also accept Direct Embroidery and Screen Prints.



 Sustainable Materials  
[Nike.com/sustainability](https://nike.com/sustainability)

**NEW**  
**NIKE DRI-FIT STRIKE 26 SHORT KZ**  
**\$45.00**

FABRIC: 100% polyester. OFFER DATE: 01/01/26 END DATE: 12/31/27

Nike Dri-FIT technology moves sweat away from skin for quicker evaporation, helping athletes stay dry and comfortable. •Elastic waistband with drawcord ensures a snug and secure fit. •Two zippered side pockets offer plenty of secure storage options. •Lightweight knit fabric has a soft, smooth feel. •Mesh panels provide breathability where athletes need it most. •Not too tight or overly baggy, these shorts are made with the classic Nike fit your athletes know and love.

- 010 Black/Black Mesh/White Mesh/Wolf Grey/(White)
- 410 Midnight Navy/Midnight Navy Mesh/White Mesh/Royal Blue/(White)



CLOSE UP VIEW OF PIPING COLORS



**MENS / HV8359**

SIZES: XS, S, M, L, XL, 2XL, 3XL



**WOMENS / HV8363**

SIZES: XS, S, M, L, X, 2XL



**KIDS / HV8365**

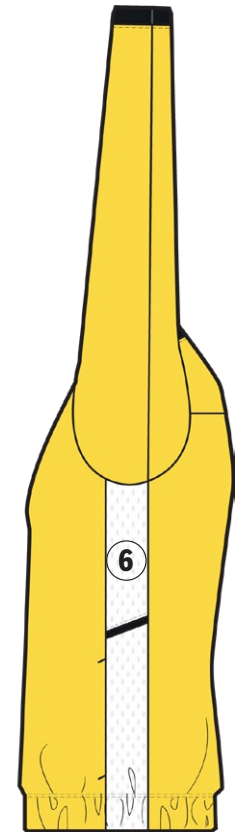
SIZES: XS, S, M, L, XL



# NIKE DRI-FIT WOVEN ACADEMY 25 TRACK JACKET

M • FZ9837 W • FZ9843 K • FZ9851

- 1 Direct Embroidery Swoosh**  
Swoosh execution is embroidered directly onto the garment. The garment will also accept Heat Transfer and Screen Prints.
- 2 Recycled Materials**  
This garment is made with 100% recycled materials.
- 3 Secure Storage**  
This style comes with zippered pockets for secure storage.
- 4 Performance Fabrics**  
Dri-FIT woven fabric construction on the body and sleeves to help wick sweat away from the body.
- 5 Signifier Language**  
The angled piping within the side panel gives a classic sport look in a modern cut.
- 6 Side Panel Construction**  
The side panel is continued from the EC24 chassis which contributes to the efficiency of our patterns, reducing material waste.



 Sustainable Materials  
[Nike.com/sustainability](https://www.nike.com/sustainability)

**NIKE DRI-FIT WOVEN ACADEMY 25 TRACK JACKET**  
**\$60.00**

**FABRIC:** Body/panels/pocket bags: 100% polyester. Rib: 97% polyester/3% spandex.  
**OFFER DATE:** 01/01/25 **END DATE:** 12/31/27

The Nike Academy 25 Track Jacket is designed to keep your players comfortable during chilly training sessions and pre-game warm-ups. Body is a Nike Dri-FIT woven fabric that moves sweat away to help keep athletes dry. This product is made with 100% recycled polyester fibers. Side panel construction uses a more efficient pattern to help reduce material waste.

- 010** Black/Wolf Grey/White/(White)
- 100** White/Black/Wolf Grey/(Black)
- 410** Midnight Navy/Royal Blue/White/(White)
- 657** University Red/Black/White/(White)
- 012** Wolf Grey/Black/White/(Black)
- 329** Green Spark/Black/White/(White)
- 463** Royal Blue/Midnight Navy/White/(White)
- 719** Tour Yellow/Black/White/(Black)



**MENS / FZ9837**

SIZES: S, M, L, XL, 2XL



**WOMENS / FZ9843**

SIZES: XS, S, M, L, XL



**KIDS / FZ9851**

SIZES: XS, S, M, L, XL



# NIKE DRI-FIT ACADEMY 25 DRILL TOP

M • FZ9767 W • FZ9770 K • FZ9773

- 1 Direct Embroidery Swoosh**  
Swoosh execution is embroidered directly onto the garment. The garment will also accept Heat Transfer and Screen Prints.
- 2 Recycled Materials**  
This garment is made with 100% recycled materials.
- 3 Thumb Loop**  
A thumb loop at the end of the sleeve opening gives the athlete the option to loop over their thumb, for a locked in, secure feeling.
- 4 Performance Fabrics**  
The front and back body is a Dri-FIT knit fabric, wicking sweat away from the body. The sleeves are a Dri-FIT stretch-knit fabric for a full range of motion.
- 5 Signifier Language**  
The angled piping within the side panel gives a classic sport look in a modern cut.
- 6 Side Panel Construction**  
The side panel is continued from the EC24 chassis which contributes to the efficiency of our patterns, reducing material waste.



 Sustainable Materials  
[Nike.com/sustainability](https://www.nike.com/sustainability)

**NIKE DRI-FIT ACADEMY 25 DRILL TOP**  
**\$52.00**

**FABRIC:** 100% polyester. **OFFER DATE:** 01/01/25 **END DATE:** 12/31/27

This long-sleeve soccer top features stretchy, sweat-wicking fabric with mesh side panels, helping keep players dry and comfortable on and off the field. This product is made with 100% recycled polyester fibers. Side panel construction uses a more efficient pattern to help reduce material waste.

- |   |   |
|---|---|
| <b>010</b> Black/Wolf Grey/White/(White)          | <b>012</b> Wolf Grey/Black/White/(Black)          |
| <b>100</b> White/Black/Wolf Grey/(Black)          | <b>329</b> Green Spark/Black/White/(White)        |
| <b>410</b> Midnight Navy/Royal Blue/White/(White) | <b>463</b> Royal Blue/Midnight Navy/White/(White) |
| <b>657</b> University Red/Black/White/(White)     | <b>719</b> Tour Yellow/Black/White/(Black)        |



**MENS / FZ9767**

**SIZES:** S, M, L, XL, 2XL



**WOMENS / FZ9770**

**SIZES:** XS, S, M, L, XL



**KIDS / FZ9773**

**SIZES:** XS, S, M, L, XL



Sustainable Materials

**NIKE DRI-FIT ACADEMY 25 CREW TOP**  
**\$50.00**

**FABRIC:** 100% polyester. **OFFER DATE:** 01/01/25 **END DATE:** 12/31/27

This long-sleeve soccer top features stretchy, sweat-wicking fabric with mesh side panels, helping keep players dry and comfortable on and off the field. A zipper from the neck opening along the shoulder seam keeps the front neck clear of distraction. This product is made with 100% recycled polyester fibers. Side panel construction uses a more efficient pattern to help reduce material waste.

- |   |   |
|---|---|
| <b>010</b> Black/Wolf Grey/White/(White)          | <b>012</b> Wolf Grey/Black/White/(Black)          |
| <b>100</b> White/Black/Wolf Grey/(Black)          | <b>329</b> Green Spark/Black/White/(White)        |
| <b>410</b> Midnight Navy/Royal Blue/White/(White) | <b>463</b> Royal Blue/Midnight Navy/White/(White) |
| <b>657</b> University Red/Black/White/(White)     | <b>719</b> Tour Yellow/Black/White/(Black)        |



**WOMENS / FZ9764**

**SIZES:** XS, S, M, L, XL



# NIKE DRI-FIT ACADEMY 25 SHORT SLEEVE TOP

M • FZ9754    W • FZ9756    K • FZ9758

- 1 Direct Embroidery Swoosh**  
Swoosh execution is embroidered directly onto the garment. The garment will also accept Heat Transfer and Screen Prints.
- 2 Recycled Materials**  
This garment is made with 100% recycled materials.
- 3 Performance Fabrics**  
Dri-FIT knit fabric on the front body, back body, and sleeves wicks sweat away, while mesh side panels offer breathability where athletes need it most.
- 4 Fit For All Athletes**  
Continuing the new Women's fit, adding more space to the waist, allowing Her to be at Her best. Fit remains consistent for Men and Kids.
- 5 Signifier Language**  
The angled piping within the side panel gives a classic sport look in a modern cut.
- 6 Side Panel Construction**  
The side panel is continued from the EC24 chassis which contributes to the efficiency of our patterns, reducing material waste.



 Sustainable Materials  
[Nike.com/sustainability](https://nike.com/sustainability)

**NIKE DRI-FIT ACADEMY 25 SS TOP**  
**\$27.00**

**FABRIC:** 100% polyester. **OFFER DATE:** 01/01/25 **END DATE:** 12/31/27

This top features sweat-wicking fabric with mesh side and back panels to help keep players cool and dry during training. This product is made with 100% recycled polyester fibers. Side panel construction uses a more efficient pattern to help reduce material waste.

- |   |   |
|---|---|
| <b>010</b> Black/Wolf Grey/White/(White)      | <b>012</b> Wolf Grey/Black/White/(Black)          |
| <b>100</b> White/Black/Wolf Grey/(Black)      | <b>329</b> Green Spark/Black/White/(White)        |
| <b>410</b> Midnight Navy/Royal Blue/(White)   | <b>463</b> Royal Blue/Midnight Navy/White/(White) |
| <b>657</b> University Red/Black/White/(White) | <b>719</b> Tour Yellow/Black/White/(Black)        |



**MENS / FZ9754**

**SIZES:** S, M, L, XL, 2XL



**WOMENS / FZ9756**

**SIZES:** XS, S, M, L, XL



**KIDS / FZ9758**

**SIZES:** XS, S, M, L, XL

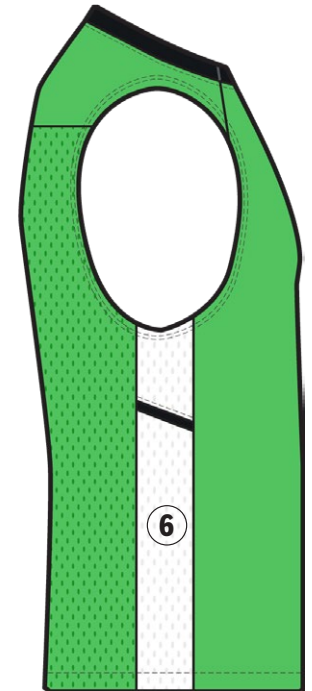
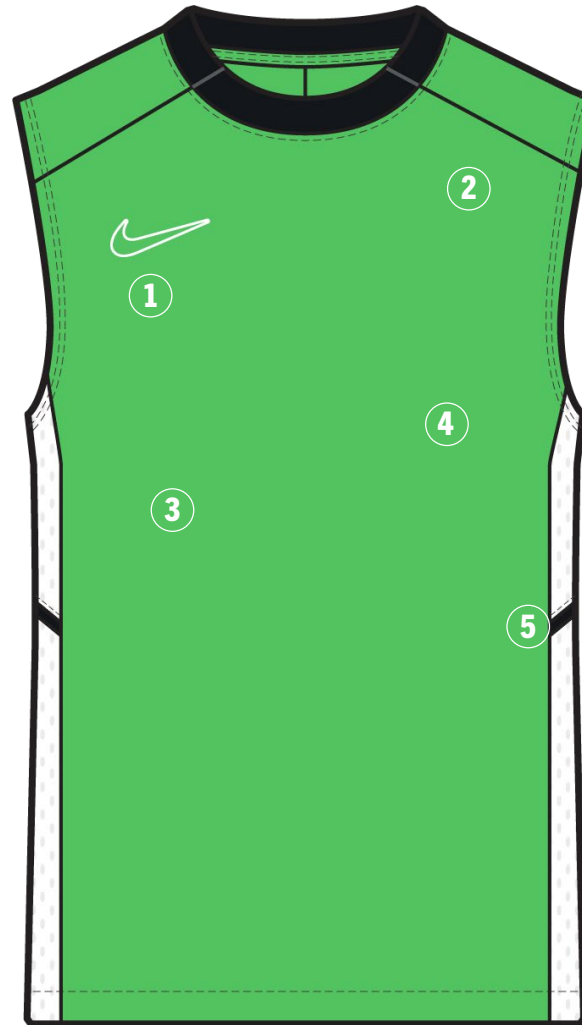


Sustainable Materials

# NIKE DRI-FIT ACADEMY 25 SLEEVELESS TOP

M • FZ9747 W • FZ9749 K • FZ9751

- 1 Direct Embroidery Swoosh**  
Swoosh execution is embroidered directly onto the garment. The garment will also accept Heat Transfer and Screen Prints.
- 2 Recycled Materials**  
This garment is made with 100% recycled materials.
- 3 Performance Fabrics**  
Dri-FIT knit fabric on the front body, back body, and sleeves wicks sweat away, while mesh side panels offer breathability where athletes need it most.
- 4 Fit For All Athletes**  
Continuing the new Women's fit, adding more space to the waist, allowing Her to be at Her best. Fit remains consistent for Men and Kids.
- 5 Signifier Language**  
The angled piping within the side panel gives a classic sport look in a modern cut.
- 6 Side Panel Construction**  
The side panel is continued from the EC24 chassis which contributes to the efficiency of our patterns, reducing material waste.



 Sustainable Materials  
[Nike.com/sustainability](https://nike.com/sustainability)

**NIKE DRI-FIT ACADEMY 25 SL TOP**

**\$27.00**

**FABRIC:** 100% polyester. **OFFER DATE:** 01/01/25 **END DATE:** 12/31/27

This top features sweat-wicking fabric with mesh side and back panels to help keep players cool and dry during training. This product is made with 100% recycled polyester fibers. Side panel construction uses a more efficient pattern to help reduce material waste.

- |   |   |
|---|---|
| <b>010</b> Black/Wolf Grey/White/(White)      | <b>012</b> Wolf Grey/Black/White/(Black)          |
| <b>100</b> White/Black/Wolf Grey/(Black)      | <b>329</b> Green Spark/Black/White/(White)        |
| <b>410</b> Midnight Navy/Royal Blue/(White)   | <b>463</b> Royal Blue/Midnight Navy/White/(White) |
| <b>657</b> University Red/Black/White/(White) | <b>719</b> Tour Yellow/Black/White/(Black)        |

**MENS / FZ9747**

**SIZES:** S, M, L, XL, 2XL



**WOMENS / FZ9749**

**SIZES:** XS, S, M, L, XL



**KIDS / FZ9751**

**SIZES:** XS, S, M, L, XL



Sustainable Materials

# NIKE DRI-FIT ACADEMY 25 PANT KPZ

M • FZ9805 W • FZ9814 K • FZ9816

- 1 Secure Storage**  
This style comes with zippered pockets for secure storage.
- 2 Recycled Materials**  
This garment is made with 100% recycled materials.
- 3 Ankle Zippers**  
A lower ankle zipper allows for on and off ease.
- 4 Performance Fabrics**  
Dri-FIT knit fabric on the front and back body wicks sweat away, while offering stretch for freedom of motion.
- 5 Direct Embroidery Swoosh**  
Swoosh execution is embroidered directly onto the garment. The garment will also accept Heat Transfer and Screen Prints.
- 6 Signifier Language**  
The angled piping within the side panel gives a classic sport look in a modern cut.
- 7 Side Panel Construction**  
The side panel is continued from the EC24 chassis which contributes to the efficiency of our patterns, reducing material waste.



 Sustainable Materials  
[Nike.com/sustainability](https://nike.com/sustainability)

**NIKE DRI-FIT ACADEMY 25 PANT KPZ**  
**\$52.00**

**FABRIC:** 100% polyester. **OFFER DATE:** 01/01/25 **END DATE:** 12/31/27

Let your players train in style and comfort with the Nike Academy 25 pants. Stretch fabric allows players to move freely while Dri-FIT technology helps them stay dry during play. Lower ankle zipper allows for easy removal over cleats. These pants are made with 100% recycled material. Side panel construction uses a more efficient pattern to help reduce material waste.

**010** Black/White/(White)

**410** Midnight Navy/White/(White)



**MENS / FZ9805**

**SIZES:** S, M, L, XL, 2XL



**WOMENS / FZ9814**

**SIZES:** XS, S, M, L, XL



**KIDS / FZ9816**

**SIZES:** XS, S, M, L, XL

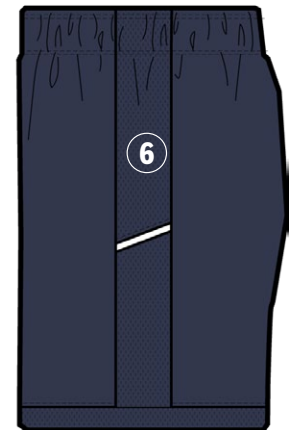


Sustainable Materials

# NIKE DRI-FIT ACADEMY 25 SHORT K

M • FZ9776 W • FZ9780 K • FZ9784

- 1 Performance Fabrics**  
Dri-FIT knit fabric on the front body, back body, and sleeves wicks sweat away, while mesh side panels offer breathability where athletes need it most.
- 2 Recycled Materials**  
This garment is made with 100% recycled materials.
- 3 Signifier Language**  
The angled piping within the side panel gives a classic sport look in a modern cut.
- 4 Inseam Measurement**  
The Men's inseam is 8.25", Women's inseam is 5.75", and the Youth inseam grades by size from 7" for a Medium.
- 5 Direct Embroidery Swoosh**  
Swoosh execution is embroidered directly onto the garment. The garment will also accept Heat Transfer and Screen Prints.
- 6 Side Panel Construction**  
The side panel is continued from the EC24 chassis which contributes to the efficiency of our patterns, reducing material waste.



 Sustainable Materials  
[Nike.com/sustainability](https://www.nike.com/sustainability)



**NIKE DRI-FIT ACADEMY 25 SHORT K**  
**\$27.00**

**FABRIC:** 100% polyester. **OFFER DATE:** 01/01/25 **END DATE:** 12/31/27

Dri-FIT technology with mesh side panels and hem helps players stay dry and cool during training. Elastic waistband with drawcord helps ensure a snug and secure fit. This product is made with 100% recycled polyester fibers. Side panel construction uses a more efficient pattern to help reduce material waste.

**010** Black/Black/(White)

**410** Midnight Navy/Midnight Navy/(White)



**MENS / FZ9776**

**SIZES:** S, M, L, XL, 2XL **INSEAM LENGTH:** 8.25"



**WOMENS / FZ9780**

**SIZES:** XS, S, M, L, XL **INSEAM LENGTH:** 5.75"



**KIDS / FZ9784**

**SIZES:** XS, S, M, L, XL **INSEAM LENGTH:** 7" (SIZE MEDIUM)



Sustainable Materials

**NIKE DRI-FIT ACADEMY PRO 24  
TRACK JACKET K  
\$65.00**

**FABRIC:** 100% polyester. **OFFER DATE:** 01/01/24 **END DATE:** 12/31/26

Help your team look and train like the pros. The Nike Dri-FIT Academy Pro 24 Track Jacket is designed to keep your players comfortable during chilly training sessions and pre-game warmups. Body is a Nike Dri-FIT knit fabric that moves sweat away to help keep players dry. This jacket is made with 100% recycled material and the back panel construction uses a more efficient pattern to help reduce material waste. Slim fit for a tailored look and feel. Zippered pockets for secure storage.

- 010** Black/Black/Black/(White)
- 455** Obsidian/Obsidian/Obsidian/(White)
- 657** University Red/University Red/University Red/(White)
- 329** Green Spark/Green Spark/Green Spark/(White)
- 468** Royal Blue/Royal Blue/Royal Blue/(White)



**MENS / FD7681**

**SIZES:** XS, S, M, L, XL, 2XL, 3XL



**WOMENS / FD7683**

**SIZES:** XS, S, M, L, XL, 2XL



**KIDS / FD7685**

**SIZES:** XS, S, M, L, XL



Sustainable Materials

**NIKE DRI-FIT ACADEMY PRO 24 DRILL TOP K**  
**\$60.00**

**FABRIC:** 100% polyester. **OFFER DATE:** 01/01/24 **END DATE:** 12/31/26

Help your team look and train like the pros in the Nike Dri-FIT Academy Pro 24 Drill Top. Lightweight ribbed material on back of the neck, shoulders and down through the arms. Body and sleeves are a Nike Dri-FIT knit fabric that moves sweat away to help keep players dry. This top is made with at least 100% recycled material. Back and side panel construction use a more efficient pattern to help reduce material waste. Standard fit for classic feel and comfort. Thumb loop at the end of sleeve opening.

- 010** Black/Black/White/(White)
- 455** Obsidian/Obsidian/White/(White)
- 657** University Red/University Red/Black/(White)
- 329** Green Spark/Green Spark/White/(White)
- 467** Royal Blue/Royal Blue/White/(White)



**MENS / FD7667**

**SIZES:** XS, S, M, L, XL, 2XL, 3XL



**WOMENS / FD7669**

**SIZES:** XS, S, M, L, XL, 2XL



**KIDS / FD7671**

**SIZES:** XS, S, M, L, XL



Sustainable Materials

**NIKE DRI-FIT ACADEMY PRO 24 CREW TOP**

**\$60.00**

**FABRIC:** 100% polyester. **OFFER DATE:** 01/01/24 **END DATE:** 12/31/26

Help your team look and train like the pros in the Nike Dri-FIT Academy Pro 24 Crew Top. Lightweight ribbed material on back of the neck wrapping the shoulders to the arm hole. Body and sleeves are a Nike Dri-FIT knit fabric that moves sweat away to help keep players dry. This top is made with at least 100% recycled material. Back and side panel construction use a more efficient pattern to help reduce material waste. Standard fit for classic feel and comfort. Thumb loop at the end of sleeve opening.

**010** Black/White/Black/(White)

**329** Green Spark/White/Green Spark/(White)

**458** Obsidian/White/Obsidian/(White)

**657** University Red/Black/University Red/(White)

**013** Wolf Grey/Black/Volt/(Black)

**410** Obsidian/Anthracite/Hyper Pink/(White)

**465** Royal Blue/White/Royal Blue/(White)

**719** Tour Yellow/Black/Tour Yellow/(Black)



**WOMENS / FD7659**

**SIZES:** XS, S, M, L, XL, 2XL



Sustainable Materials

**NIKE DRI-FIT ACADEMY PRO 24 PANT KPZ**  
**\$60.00**

**FABRIC:** 100% polyester. **OFFER DATE:** 01/01/24 **END DATE:** 12/31/26

Help your team look and train like the pros. The Nike Dri-FIT Academy Pro 24 Pant is designed to keep your players comfortable during chilly training sessions and pre-game warmups. Lightweight rib material on the lower leg to help enable mobility and range of motion. Body is a Nike Dri-FIT knit fabric that moves sweat away to help keep players dry. This pant is made with at least 75% recycled material and the interior gusset construction helps reduce material waste. Slim fit for tailored look and feel. Zippered pockets for secure storage. Lower ankle zipper allows for easy removal over cleats.

**010** Black/(White)

**451** Obsidian/(White)



**MENS / FD7672**

**SIZES:** XS, S, M, L, XL, 2XL, 3XL



**WOMENS / FD7677**

**SIZES:** XS, S, M, L, XL, 2XL



**KIDS / FD7679**

**SIZES:** XS, S, M, L, XL



Sustainable Materials

**NIKE DRI-FIT ACADEMY PRO 24 SS TOP K**  
**\$35.00**

**FABRIC:** 100% polyester. **OFFER DATE:** 01/01/24 **END DATE:** 12/31/26

Help your team look and train like the pros in the Nike Dri-FIT Academy Pro 24 SS Top K. Lightweight rib material on the front and back neck wrapping the shoulders to the armhole. Body and sleeves are a Nike Dri-FIT knit fabric that moves sweat away to help keep players dry. This top is made with 100% recycled material and the side panel construction uses a more efficient pattern to help reduce material waste. Slim fit for a tailored look and feel.

- 010** Black/White/Black/(White)
- 458** Obsidian/White/Obsidian/(White)
- 657** University Red/Black/University Red/(White)
- 329** Green Spark/White/Green Spark/(White)
- 465** Royal Blue/White/Royal Blue/(White)



**MENS / FD7592**

**SIZES:** XS, S, M, L, XL, 2XL, 3XL



**WOMENS / FD7594**

**SIZES:** XS, S, M, L, XL, 2XL



**KIDS / FD7597**

**SIZES:** XS, S, M, L, XL



Sustainable Materials

**NIKE DRI-FIT ACADEMY PRO 24 SHORT KZ**

**\$35.00**

**FABRIC:** 100% polyester. **OFFER DATE:** 01/01/24 **END DATE:** 12/31/26

Help your team look and train like the pros in the Nike Dri-FIT Academy Pro 24 Short KZ. Lightweight ribbed material on the lower leg to help enable mobility and range of motion. Shorts are constructed with Dri-FIT knit fabric that moves sweat away to help keep players dry. This product made with 100% recycled material. Side panel and gusset construction use a more efficient pattern to help reduce material waste. Standard fit for classic feel and comfort. Zippered pockets for secure storage.

**010** Black/(White)

**451** Obsidian/(White)



**MENS / FD7653**

**SIZES:** XS, S, M, L, XL, 2XL, 3XL, ST, MT, LT, XLT, 2XLT, 3XLT

**INSEAM LENGTH:** 8.25"



**WOMENS / FD7655**

**SIZES:** XS, S, M, L, XL, 2XL, XST, ST, MT, LT, XLT, 2XLT

**INSEAM LENGTH:** 4"



**KIDS / FD7657**

**SIZES:** XS, S, M, L, XL



Sustainable Materials

**NIKE THERMA-FIT ACADEMY PRO 24  
SDF JACKET**  
**\$185.00**

FABRIC: 100% polyester. OFFER DATE: 01/01/24 END DATE: 12/31/26

010 Black/(White)

451 Obsidian/(White)



**MENS / FD7709**

SIZES: XS, S, M, L, XL, 2XL, 3XL



**WOMENS / FD7712**

SIZES: XS, S, M, L, XL, 2XL



**KIDS / FD7714**

SIZES: XS, S, M, L, XL



Sustainable Materials

**NIKE THERMA-FIT ACADEMY PRO 24 FALL JACKET**  
**\$155.00**

FABRIC: 100% polyester. OFFER DATE: 01/01/24 END DATE: 12/31/26

010 Black/(White)

451 Obsidian/(White)



**MENS / FD7702**

SIZES: XS, S, M, L, XL, 2XL, 3XL



**WOMENS / FD7704**

SIZES: XS, S, M, L, XL, 2XL



**KIDS / FD7708**

SIZES: XS, S, M, L, XL



Sustainable Materials

# NIKE STORM-FIT ACADEMY PRO 25 RAIN JACKET

M • FZ9858    W • FZ9860    K • FZ9863

- 1 Heat Transfer Swoosh**  
Swoosh execution is a flat ink heat transfer. The garment will also accept Direct Embroidery and Screen Prints.
- 2 Recycled Materials**  
This garment is made with 100% recycled materials.
- 3 Hood Adaptability**  
A bungee cord Jock allows the athlete to secure the hood to their personal preference.
- 4 Signifier Language**  
The angled piping within the side panel gives a classic sport look in a modern cut.
- 5 Secure Storage**  
This style comes with zippered pockets for secure storage.
- 6 Performance Fabrics**  
Storm-FIT water repellent woven fabric on body and sleeves helps keep you dry.
- 7 Performance Ventilation**  
A vent in the back allows for breathability to keep the athlete cool while training.
- 8 Side Panel Construction**  
The side panel is continued from the EC24 chassis which contributes to the efficiency of our patterns, reducing material waste.



 Sustainable Materials  
[Nike.com/sustainability](https://nike.com/sustainability)

**NIKE STORM-FIT ACADEMY PRO 25  
RAIN JACKET  
FZ9858 \$90.00**

**FABRIC:** 100% polyester. **OFFER DATE:** 01/01/25 **END DATE:** 12/31/27

Designed to keep your teams covered when the weather turns wet. Storm-FIT water-repellent finish with a back vent helps players stay warm and dry without overheating. A bungee cord lock allows the athlete to secure the hood to their personal preference. This product is made with 100% recycled polyester fibers. Side panel construction uses a more efficient pattern to help reduce material waste.

**010** Black/(White)

**410** Midnight Navy/(White)



**MENS / FZ9858**

**SIZES:** XS, S, M, L, XL, 2XL, 3XL



**WOMENS / FZ9860**

**SIZES:** XS, S, M, L, XL, 2XL, 3XL



**KIDS / FZ9863**

**SIZES:** XS, S, M, L, XL



Sustainable Materials

# NEW NIKE THERMA-FIT PARK 26 SDF JACKET

M • HM7278 W • HM7280 K • HM7282

- 1 Comfort Hood**  
Lined hood provides warmth and comfort with this soft fleece fabric.
- 2 Direct Embroidery Swoosh**  
Swoosh execution is embroidered directly onto the garment.
- 3 Recycled Materials**  
This garment is made with 100% recycled materials.
- 4 Secure Storage**  
Two zippered side seam pockets offer secure storage options.
- 5 Performance Fabrics**  
The outer shell material is a woven, water repellant fabric, keeping athletes warm and dry on the sidelines.
- 6 Fit For All Athletes**  
Providing extended coverage to all athletes on the pitch.



 Sustainable Materials  
[Nike.com/sustainability](https://nike.com/sustainability)

**NEW**  
**NIKE THERMA-FIT PARK 26 SDF JACKET**  
**\$150.00**

FABRIC: 100% polyester. OFFER DATE: 01/01/26 END DATE: 12/31/31

Nike Therma-FIT technology helps manage the body's natural heat to help keep athletes warm in cold-weather conditions. • Fleece-lined hood helps provides warmth and comfort. • Water-repellent finish helps keep players dry in wet weather. • Two zippered side pockets offer plenty of secure storage options. • Not too tight or overly baggy, this jacket made with the classic Nike fit your athletes know and love.

010 Black/White/(White)

410 Midnight Navy/White/(White)



**MENS / HM7278**

SIZES: XS, S, M, L, XL, 2XL, 3XL



**WOMENS / HM7280**

SIZES: XS, S, M, L, X, 2XL



**KIDS / HM7282**

SIZES: XS, S, M, L, XL



Sustainable Materials

# NEW NIKE THERMA-FIT PARK 26 FALL JACKET

M • HM7270 W • HM7272 K • HM7274

- 1 Comfort Hood**  
Lined hood provides warmth and comfort with this soft fleece fabric.
- 2 Direct Embroidery Swoosh**  
Swoosh execution is embroidered directly onto the garment.
- 3 Recycled Materials**  
This garment is made with 100% recycled materials.
- 4 All Over Print**  
The graphic print is shared from the Champions League 24/25 prematch graphic, clashing images of classic sculpture with a D.I.Y zine aesthetic, a rebel celebration of the Nike Goddess.
- 5 Performance Fabrics**  
The outer shell material is a woven, water repellent fabric, keeping athletes warm and dry on the sidelines.
- 6 Secure Storage**  
Two zippered side seam pockets offer secure storage options.



 Sustainable Materials  
[Nike.com/sustainability](https://nike.com/sustainability)

**NEW**  
**NIKE THERMA-FIT PARK 26 FALL JACKET**  
**\$120.00**

**FABRIC:** 100% polyester. **OFFER DATE:** 01/01/26 **END DATE:** 12/31/31

Nike Therma-FIT technology helps manage the body's natural heat to help keep athletes warm in cold-weather conditions. • Fleece-lined hood helps provides warmth and comfort. • Water-repellent finish helps keep players dry in wet weather. • Two zippered side pockets offer plenty of secure storage options. • Not too tight or overly baggy, this jacket made with the classic Nike fit your athletes know and love.

**010** Black/White/(White)

**410** Midnight Navy/White/(White)



**MENS / HM7270**

**SIZES:** XS, S, M, L, XL, 2XL, 3XL



**WOMENS / HM7272**

**SIZES:** XS, S, M, L, X, 2XL



**KIDS / HM7274**

**SIZES:** XS, S, M, L, XL

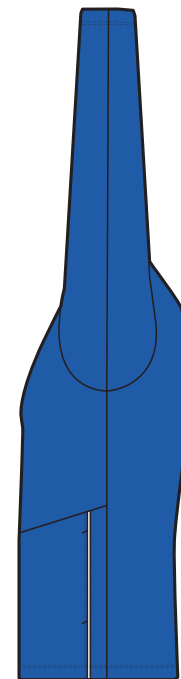


Sustainable Materials

# NEW NIKE DRI-FIT PARK 26 TRACK JACKET K

M • HM7249 W • HM7252 K • HM7256

- 1 Direct Embroidery Swoosh**  
Swoosh execution is embroidered directly onto the garment. The garment will also accept Heat Transfer and Screen Prints.
- 2 Recycled Materials**  
This garment is made with 100% recycled materials.
- 3 Secure Storage**  
Two zippered side seam pockets offer secure storage options on the jacket.
- 4 Performance Fabrics**  
Constructed with a Dri-FIT knit fabric to wick sweat away from the body.
- 5 Fit For All Athletes**  
Continuing the new Women's fit, adding more space to the waist, allowing Her to be at Her best. Fit remains consistent for Men and Youth.



 Sustainable Materials  
[Nike.com/sustainability](https://nike.com/sustainability)

**NEW**  
**NIKE DRI-FIT PARK 26 TRACK JACKET K**  
**\$45.00**

FABRIC: 100% polyester. OFFER DATE: 01/01/26 END DATE: 12/31/31

- 010 Black/White/(White)    100 White/Black/(Black)    410 Midnight Navy/White/(White)
- 463 Royal Blue/White/(White)    657 University Red/White/(White)



**MENS / HM7249**

SIZES: XS, S, M, L, XL, 2XL, 3XL



**WOMENS / HM7252**

SIZES: XS, S, M, L, X, 2XL



**KIDS / HM7256**

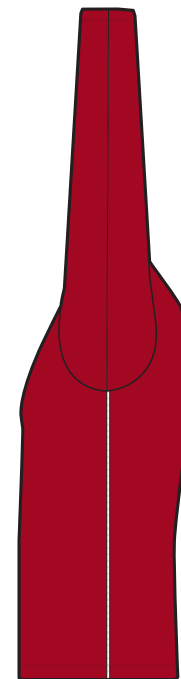
SIZES: XS, S, M, L, XL



# NEW NIKE DRI-FIT PARK 26 DRILL TOP

M • IB7536 W • IB7540 K • IB7542

- 1 Direct Embroidery Swoosh**  
Swoosh execution is embroidered directly onto the garment. The garment will also accept Heat Transfer and Screen Prints.
- 2 Center Zipper**  
Center half zip to regulate heat and for ease of on/off.
- 3 Recycled Materials**  
This garment is made with 100% recycled materials.
- 4 Performance Fabrics**  
Constructed with a Dri-FIT knit fabric to wick sweat away from the body.
- 5 Fit For All Athletes**  
Continuing the new Women's fit, adding more space to the waist, allowing Her to be at Her best. Fit remains consistent for Men and Youth.



 Sustainable Materials  
[Nike.com/sustainability](https://www.nike.com/sustainability)

**NEW**  
**NIKE DRI-FIT PARK 26 DRILL TOP**  
**\$50.00**

FABRIC: 100% polyester. OFFER DATE: 01/01/26 END DATE: 12/31/31

Nike Dri-FIT technology moves sweat away from skin for quicker evaporation, helping athletes stay dry and comfortable. •Color pop piping on the neck opening and lower body.

- 010 Black/White/(White)
- 100 White/Black/(Black)
- 410 Midnight Navy/White/(White)
- 463 Royal Blue/White/(White)
- 657 University Red/White/(White)

**FIT DETAILS:**  
**MENS** • Slim fit intent for a tailored look and feel.  
**WOMENS** • Updated women's fit adds more space to the waist.  
**KIDS** • Not too tight or overly baggy, this top is made with the classic Nike fit your athletes know and love.



**MENS / IB7536**

SIZES: XS, S, M, L, XL, 2XL, 3XL



**WOMENS / IB7540**

SIZES: XS, S, M, L, X, 2XL



**KIDS / IB7542**

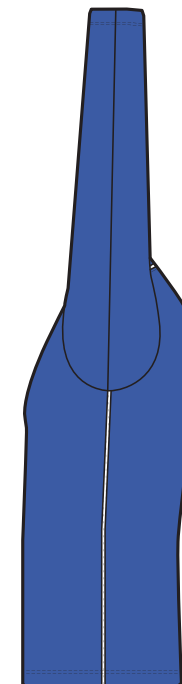
SIZES: XS, S, M, L, XL



# NEW NIKE DRI-FIT PARK 26 CREW TOP

M • HM7165 W • HM7167 K • HM7170

- 1 Direct Embroidery Swoosh**  
Swoosh execution is embroidered directly onto the garment. The garment will also accept Heat Transfer and Screen Prints.
- 2 Recycled Materials**  
This garment is made with 100% recycled materials.
- 3 Performance Fabrics**  
Constructed with a Dri-FIT knit fabric to wick sweat away from the body.
- 4 Fit For All Athletes**  
Continuing the new Women's fit, adding more space to the waist, allowing Her to be at Her best. Fit remains consistent for Men and Youth.



 Sustainable Materials  
[Nike.com/sustainability](https://www.nike.com/sustainability)

**NEW**  
**NIKE DRI-FIT PARK 26 CREW TOP**  
**\$45.00**

FABRIC: 100% polyester. OFFER DATE: 01/01/26 END DATE: 12/31/31

Nike Dri-FIT technology moves sweat away from skin for quicker evaporation, helping athletes stay dry and comfortable. • Mesh piping provides a sporty visual with the opportunity to color pop.

- |                                     |   |  |
|-------------------------------------|---|--|
| <b>010</b> Black/White/(White)      | <b>100</b> White/Black/(Black)          | <b>410</b> Midnight Navy/White/(White) |
| <b>463</b> Royal Blue/White/(White) | <b>657</b> University Red/White/(White) |  |

**FIT DETAILS:**

**MENS** • Slim fit intent for a tailored look and feel.

**WOMENS** • Updated women's fit adds more space to the waist.

**KIDS** • Not too tight or overly baggy, this top is made with the classic Nike fit your athletes know and love.



**MENS / HM7165**

SIZES: XS, S, M, L, XL, 2XL, 3XL



**WOMENS / HM7167**

SIZES: XS, S, M, L, X, 2XL



**KIDS / HM7170**

SIZES: XS, S, M, L, XL



Sustainable Materials

# NEW NIKE DRI-FIT PARK 26 SS TOP

M • HM7127 W • HM7160 K • HM7134

- 1 Direct Embroidery Swoosh**  
Swoosh execution is embroidered directly onto the garment. The garment will also accept Heat Transfer and Screen Prints.
- 2 Recycled Materials**  
This garment is made with 100% recycled materials.
- 3 Performance Fabrics**  
Dri-FIT knit fabric on the front body, back body, and sleeves wicks sweat away, while mesh side panels offer breathability where athletes need it most.
- 4 Fit For All Athletes**  
Continuing the new Women's fit, adding more space to the waist, allowing Her to be at Her best. Fit remains consistent for Men and Youth.



 Sustainable Materials  
[Nike.com/sustainability](https://nike.com/sustainability)

**NEW**  
**NIKE DRI-FIT PARK 26 SS TOP**  
**\$20.00**

FABRIC: 100% polyester. OFFER DATE: 01/01/26 END DATE: 12/31/31

Nike Dri-FIT technology moves sweat away from skin for quicker evaporation, helping athletes stay dry and comfortable. • Mesh back provides breathability where athletes need it most.

- 010** Black/White/(White)      **100** White/Black/(Black)      **410** Midnight Navy/White/(White)
- 463** Royal Blue/White/(White)      **657** University Red/White/(White)

**FIT DETAILS:**  
**MENS** • Slim fit intent for a tailored look and feel.  
**WOMENS** • Updated women's fit adds more space to the waist.  
**KIDS** • Not too tight or overly baggy, this jersey is made with the classic Nike fit your athletes know and love.



**MENS / HM7127**

SIZES: XS, S, M, L, XL, 2XL, 3XL



**WOMENS / HM7160**

SIZES: XS, S, M, L, X, 2XL



**KIDS / HM7134**

SIZES: XS, S, M, L, XL



# NEW NIKE DRI-FIT PARK 26 SHORT KZ

M • HM7146    W • HM7162    K • HM7164

- 1 Secure Storage**  
Two zippered side seam pockets offer secure storage options on this short.
- 2 Recycled Materials**  
This garment is made with 100% recycled materials.
- 3 Mesh Piping**  
Mesh piping gives you the opportunity to pop your team color.
- 4 Performance Fabrics**  
Constructed with Dri-FIT knit fabric that wicks sweat away from the body.
- 5 Direct Embroidery Swoosh**  
Swoosh execution is embroidered directly onto the garment. The garment will also accept Heat Transfer and Screen Prints.



 Sustainable Materials  
[Nike.com/sustainability](https://nike.com/sustainability)

**NEW**  
**NIKE DRI-FIT PARK 26 SHORT KZ**  
**\$30.00**

FABRIC: 100% polyester. OFFER DATE: 01/01/26 END DATE: 12/31/31

Nike Dri-FIT technology moves sweat away from skin for quicker evaporation, helping athletes stay dry and comfortable. •Elastic waistband with drawcord ensures a snug and secure fit. •Mesh piping provides a sporty visual with the opportunity to color pop. •Two zippered side pockets offer plenty of secure storage options. •Lightweight knit fabric has a soft, smooth feel. •Not too tight or overly baggy, these shorts are made with the classic Nike fit your athletes know and love.

010 Black/White/(White)

410 Midnight Navy/White/(White)



**MENS / HM7146**

SIZES: XS, S, M, L, XL, 2XL, 3XL, ST, MT, LT, XLT, 2XLT, 3XLT



**WOMENS / HM7162**

SIZES: XS, S, M, L, XL, 2XL, XST, ST, MT, LT, XLT, 2XLT



**KIDS / HM7164**

SIZES: XS, S, M, L, XL



Sustainable Materials

# NEW NIKE DRI-FIT PARK 26 PANT KP

M • HM7171 W • HM7210 K • HM7212

- 1 Performance Fabrics**  
Dri-FIT knit fabric on the main body wicks sweat away, while a mesh back panel offers additional breathability and comfort where athletes need it most.
- 2 Recycled Materials**  
This garment is made with 100% recycled materials.
- 3 Mesh Piping**  
Mesh piping provides a sporty visual with the opportunity to color pop.
- 4 Direct Embroidery Swoosh**  
Swoosh execution is embroidered directly onto the garment. The garment will also accept Heat Transfer and Screen Prints.
- 5 Pockets**  
Two side seam pockets offer storage options.



 Sustainable Materials  
[Nike.com/sustainability](https://www.nike.com/sustainability)

**NEW**  
**NIKE DRI-FIT PARK 26 PANT KP**  
**\$35.00**

**FABRIC:** 100% polyester. **OFFER DATE:** 01/01/26 **END DATE:** 12/31/31

Nike Dri-FIT technology moves sweat away from skin for quicker evaporation, helping athletes stay dry and comfortable. •Elastic waistband with drawcord ensures a snug and secure fit, •Lightweight knit fabric has a soft, smooth feel. •Mesh piping provides a sporty visual with the opportunity to color pop.

**010** Black/(White)

**410** Midnight Navy/(White)

**FIT DETAILS:**

**MENS** • Slim fit intent for a tailored look and feel.

**WOMENS** • Not too tight or overly baggy, these pants are made with the classic Nike fit your athletes know and love.

**KIDS** • Not too tight or overly baggy, these pants are made with the classic Nike fit your athletes know and love.



**MENS / HM7171**

**SIZES:** XS, S, M, L, XL, 2XL, 3XL



**WOMENS / HM7210**

**SIZES:** XS, S, M, L, X, 2XL



**KIDS / HM7212**

**SIZES:** XS, S, M, L, XL



Sustainable Materials

**NIKE DRY PARK FIRSTLAYER JERSEY LS**

**\$32.00**

**FABRIC:** 100% polyester. **OFFER DATE:** 01/01/20 **END DATE:** 12/31/26

When you need a little extra warmth, the Nike Dri-FIT Park First Layer Jersey provides coverage that won't cut down your speed. The stretchy fabric and Invisible Thumb Loops create a streamlined layer that moves smoothly below your kit. Modified V-neck sits flush against the body below an outer-layer. Tight fit gives a streamlined look and feel. Raglan sleeves eliminate the shoulder seam to help you move freely. Invisible Thumb Loops keep hands covered and warm, but stay hidden when not in use. Swoosh design trademark is heat transferred on the center of the chest.

- 010** Black/(White)
- 100** White/(Cool Grey)
- 410** Midnight Navy/(White)



**MENS / AV2609**

**SIZES:** S, M, L, XL, 2XL **BODY WIDTH:** 19.9" **BODY LENGTH:** 30" (SIZE LARGE)



**WOMENS / AV2610**

**SIZES:** XS, S, M, L, XL



**KIDS / AV2611**

**SIZES:** XS, S, M, L, XL



**MENS NIKE PRO WARM TRAINING TIGHT**  
**DH4802 \$58.00**

**SIZES:** S, M, L, XL, 2XL, 3XL  
**FABRIC:** Body: 88% polyester/12% spandex. Rib: 92% polyester/8% spandex.  
**OFFER DATE:** 01/01/22  
**END DATE:** 04/01/28

The Nike Pro Warm Tights are made with sweat-wicking technology and ribbed panels to keep you comfortable. Wear them for warmth during your toughest workouts or under your game-day uniform. Nike Dri-FIT technology moves sweat away from your skin for quicker evaporation, helping you stay dry and comfortable. Stretchy fabric creates a compressive feel. Ribbed panels at the lower back, inseam and inner ankle add flexibility to keep you moving freely. Tight fit for a body-hugging feel.

**Hip width: 17", Inseam length: 26" (size large).**

**010** Black/(White)      **100** White/(Black)



BACK VIEW

**MENS NIKE PRO TRAINING TIGHT**  
**DH4769 \$35.00**

**SIZES:** S, M, L, XL, 2XL, 3XL  
**FABRIC:** Body: 90% polyester/10% spandex. Mesh: 92% polyester/8% spandex.  
**OFFER DATE:** 01/01/22  
**END DATE:** 04/01/27

More than a base layer, the Nike Pro Tights hug you with lightweight fabric that keeps you feeling dry, cool and supported from warmups through cool downs. Nike Dri-FIT technology moves sweat away from your skin for quicker evaporation. They're made with at least 75% recycled polyester fibers in a stretchy fabric that helps you move naturally during high-intensity sets. Mesh at the inseam and upper seat lets air flow to help keep you cool. A double-layer, darted mesh gusset in front puts breathability where you need it. The snug elastic waistband holds the tights in place. Flat seams throughout feel smooth against your skin. Customize with your team's colors for a coordinated look.

**Hip width: 17", Inseam length: 28.75" (size large).**

**010** Black/(White)      **100** White/(Black)



BACK VIEW

**MENS NIKE PRO 3/4-LENGTH TRAINING TIGHT**  
**DH4780 \$35.00**

**SIZES:** S, M, L, XL, 2XL, 3XL  
**FABRIC:** Body: 90% polyester/10% spandex. Mesh: 92% polyester/8% spandex.  
**OFFER DATE:** 01/01/22  
**END DATE:** 04/01/27

Much more than a base layer, the Nike Pro Tights hug you with lightweight fabric that keeps you feeling dry, cool and supported from warmups through cool downs. They're made with at least 75% recycled polyester fibers in a stretchy design that helps you move at full intensity during your toughest workouts or competitions. Mesh at the inseam and upper seat lets air flow to help keep you cool. A double-layer, darted mesh gusset in front puts breathability where you need it. The snug elastic waistband holds the tights in place. Flat seams throughout feel smooth against your skin. Customize with your team's colors for a coordinated look.

**Hip width: 17", Inseam length: 23.5" (size large).**

**010** Black/(White)                      **100** White/(Black)



BACK VIEW

**MENS NIKE PRO TRAINING COMPRESSION**  
**SHORT**  
**DH4762 \$30.00**

**SIZES:** XS, S, M, L, XL, 2XL, 3XL, 4XL, LT, XLT, 2XLT, 3XLT, 4XLT  
**FABRIC:** Body: 90% polyester/10% spandex. Mesh: 92% polyester/8% spandex.  
**ELASTIC:** 46% nylon/43% polyester/11% spandex.  
**OFFER DATE:** 01/01/22  
**END DATE:** 04/01/27

Much more than a base layer, the Nike Pro Shorts hug you with lightweight fabric that keeps you feeling dry, cool and supported from warmups through cool downs. They're made with at least 75% recycled polyester fibers in a stretchy design that helps you move at full intensity during your toughest workouts or competitions. Mesh at the inseam and upper seat lets air flow to help keep you cool. A double-layer, darted mesh gusset in front prioritizes breathability where you need it most. Customize with your team's colors for a coordinated look.

**Hip width: 17", Inseam length: 7.75" (size large). Tall inseam length: +1" (all sizes).**

**010** Black/(Cool Grey)                      **073** Dark Steel Grey/(Black)  
**100** White/(Cool Grey)                      **341** Gorge Green/(Cool Grey)  
**419** College Navy/(Cool Grey)                      **493** Game Royal/(Cool Grey)  
**545** Court Purple/(Cool Grey)                      **657** University Red/(Cool Grey)



BACK VIEW

**WOMENS NIKE PRO 365 TIGHT**  
**DH4893 \$50.00**

**SIZES:** XS, S, M, L, XL, 2XL  
**FABRIC:** Body: 83% polyester/17% spandex. Mesh: 81% polyester/19% spandex.  
**OFFER DATE:** 01/01/22  
**END DATE:** 04/01/27

The Nike Pro 365 Leggings wrap you in soft fabric that moves as you stretch, lunge and sprint your way through your toughest workouts. This mindful design is made with at least 75% recycled polyester fibers and mesh at the back panel that lets your skin breathe when the temp starts to rise. Nike Dri-FIT technology moves sweat away from your skin for quicker evaporation, helping you stay dry and comfortable. A wide elastic waistband holds the leggings in place. Tight fit for a body-hugging feel. Customize with your team's colors for a coordinated look.

**Hip width: 14.5", Inseam length: 26.5" (size medium).**

- |                                 |                                   |                                   |
|---------------------------------|-----------------------------------|-----------------------------------|
| <b>010</b> Black/(White)        | <b>091</b> Carbon Heather/(Black) | <b>100</b> White/(Black)          |
| <b>419</b> College Navy/(White) | <b>493</b> Game Royal/(White)     | <b>657</b> University Red/(White) |



BACK VIEW

**WOMENS NIKE PRO 365 7/8-LENGTH TIGHT**  
**DH4896 \$45.00**

**SIZES:** XS, S, M, L, XL, 2XL  
**FABRIC:** Body: 78-83% polyester/17-22% spandex. Material percentages may vary.  
**MESH:** 81% polyester/19% spandex.  
**OFFER DATE:** 01/01/22  
**END DATE:** 04/01/27

The Nike Pro 365 Leggings wrap you in soft knit fabric that moves as you stretch, lunge and sprint your way through your toughest workouts. The mindful design is made with at least 50% recycled polyester fibers and mesh at the back that lets your skin breathe when the temp starts to rise. Nike Dri-FIT technology moves sweat away from your skin for quicker evaporation, helping you stay dry and comfortable. Tight fit for a body-hugging feel. Customize the colors and details for a coordinated look for your team.

**Hip width: 14", Inseam length: 24" (size medium).**

- |                                 |                                   |                                   |
|---------------------------------|-----------------------------------|-----------------------------------|
| <b>010</b> Black/(White)        | <b>091</b> Carbon Heather/(Black) | <b>100</b> White/(Black)          |
| <b>419</b> College Navy/(White) | <b>493</b> Game Royal/(White)     | <b>657</b> University Red/(White) |



BACK VIEW

**WOMENS NIKE PRO HYPERCOOL 3/4 TIGHT  
DX9129 \$60.00**

**SIZES:** XS, S, M, L, XL, 2XL, 3XL, ST, MT, LT, XLT, 2XLT, 3XLT  
**FABRIC:** Body: 82% polyester/18% spandex. Mesh: 92% polyester/8% spandex.  
 Overlays: 84% polyester/16% spandex. Gusset Lining: 100% polyester.  
**OFFER DATE:** 07/01/23  
**END DATE:** 04/01/28

The Nike Pro HyperCool Tights feature durable, sweat-wicking fabric to keep you dry and comfortable during your game or practice. 3/4-length design provides coverage with added cooling. Flat elastic waistband provides a secure fit.

**Hip width: 13.75", Inseam length: 20.5" (size medium). Tall inseam length: +1.25".**

- |                                     |                                    |                                 |
|-------------------------------------|------------------------------------|---------------------------------|
| <b>010</b> Black/(White)            | <b>060</b> Team Anthracite/(White) | <b>100</b> White/(Black)        |
| <b>341</b> Team Dark Green/(White)  | <b>419</b> Team Navy/(White)       | <b>493</b> Team Royal/(White)   |
| <b>545</b> Team Purple/(White)      | <b>610</b> Team Cardinal/(White)   | <b>657</b> Team Scarlet/(White) |
| <b>669</b> Team Dark Maroon/(White) |                                    |                                 |



**WOMENS NIKE PRO 8" SHORT  
DX9131 \$47.00**

**SIZES:** XS, S, M, L, XL, 2XL, 3XL, ST, MT, LT, XLT, 2XLT, 3XLT  
**FABRIC:** Body: 82% polyester/18% spandex. Gusset lining: 100% polyester.  
**OFFER DATE:** 07/01/23  
**END DATE:** 04/01/28

The Nike Pro 8" Shorts wrap you in stretchy fabric with Dri-FIT technology to keep you feeling supported and dry during intense workouts. An exposed elastic waistband gives you a supportive feel.  
**Hip width: 13.75".**

- |                                     |                                    |                                 |
|-------------------------------------|------------------------------------|---------------------------------|
| <b>010</b> Black/(White)            | <b>060</b> Team Anthracite/(White) | <b>100</b> White/(Black)        |
| <b>341</b> Team Dark Green/(White)  | <b>419</b> Team Navy/(White)       | <b>493</b> Team Royal/(White)   |
| <b>545</b> Team Purple/(White)      | <b>610</b> Team Cardinal/(White)   | <b>657</b> Team Scarlet/(White) |
| <b>669</b> Team Dark Maroon/(White) |                                    |                                 |



**WOMENS NIKE PRO 365 SHORT 5IN  
DH4886 \$30.00**

**SIZES:** XS, S, M, L, XL, 2XL  
**FABRIC:** 83% polyester/17% spandex.  
**OFFER DATE:** 01/01/22  
**END DATE:** 04/01/27

The Nike Pro 365 Shorts wrap you in stretchy fabric with Dri-FIT technology to keep you feeling supported and dry during intense workouts. This mindful, versatile design uses at least 75% recycled polyester fibers and smoothly layers under other training wear. The mid-rise design has a wide elastic waistband that wraps your core in supportive comfort. Tight fit for a body-hugging feel. Customize these shorts with your team's colors for a coordinated look.  
**Hip width: 14.5", Inseam length: 5" (size medium).**

- |                                 |                                   |                               |
|---------------------------------|-----------------------------------|-------------------------------|
| <b>010</b> Black/(White)        | <b>091</b> Carbon Heather/(Black) | <b>100</b> White/(Black)      |
| <b>341</b> Gorge Green/(White)  | <b>419</b> College Navy/(White)   | <b>493</b> Game Royal/(White) |
| <b>545</b> Court Purple/(White) | <b>657</b> University Red/(White) |                               |



**WOMENS NIKE PRO 365 SHORT 3IN  
DH4863 \$30.00**

**SIZES:** XS, S, M, L, XL, 2XL  
**FABRIC:** 78% polyester/22% spandex.  
**OFFER DATE:** 01/01/22  
**END DATE:** 04/01/27

The Nike Pro 365 Shorts are made with stretchy, smooth, supportive fabric—made with at least 50% recycled polyester fibers—that wicks sweat to help you stay dry and comfortable during your workout. Nike Dri-FIT technology moves sweat away from your skin for quicker evaporation, helping you stay dry and comfortable. A wide, mid-rise elastic waistband feels supportive around your core. Tight fit for a body-hugging feel. Customize with your team's colors for a coordinated look.  
**Hip width: 14.5", Inseam length: 3" (size medium).**

- |                                 |                                   |                          |
|---------------------------------|-----------------------------------|--------------------------|
| <b>010</b> Black/(White)        | <b>091</b> Carbon Heather/(Black) | <b>100</b> White/(Black) |
| <b>419</b> College Navy/(White) |                                   |                          |



**WOMENS NIKE PRO LEAKPROOF PERIOD PROTECTION TEAM 5IN SHORT FQ3012 \$45.00**

**SIZES:** XXS, XS, S, M, L, XL, 2XL  
**FABRIC:** Body: 82% polyester/18% spandex. Panels Lining: 62% polyester/38% spandex. Gusset Lining: 66% polyester/34% spandex.  
**OFFER DATE:** 07/01/24  
**END DATE:** 04/01/28

Give your players the protection they need. These shorts are made with an ultrathin absorbent liner that helps prevent period leaks when worn as a backup to usual protection. Color options allow for a team-right look. An incredibly sleek design includes a superthin, absorbent liner and a sewn-in brief made to move with you. Nike Dri-FIT technology moves sweat away from your skin for quicker evaporation, helping you stay dry and comfortable. **Hip width: 14.5" (size medium).**



- |                                 |                                   |                               |
|---------------------------------|-----------------------------------|-------------------------------|
| <b>010</b> Black/(White)        | <b>091</b> Carbon Heather/(Black) | <b>100</b> White/(Black)      |
| <b>341</b> Gorge Green/(White)  | <b>419</b> College Navy/(White)   | <b>493</b> Game Royal/(White) |
| <b>545</b> Field Purple/(White) | <b>657</b> University Red/(White) |                               |

**WOMENS NIKE PRO LEAKPROOF PERIOD PROTECTION 3IN SHORT FQ3007 \$45.00**

**SIZES:** XXS, XS, S, M, L, XL, 2XL  
**FABRIC:** Body: 82% polyester/18% spandex. Panels Lining: 62% polyester/38% spandex. Gusset Lining: 66% polyester/34% spandex.  
**OFFER DATE:** 07/01/24  
**END DATE:** 04/01/28

Give your players the protection they need. These shorts are made with an ultrathin absorbent liner that helps prevent period leaks when worn as a backup to usual protection. Color options allow for a team-right look. An incredibly sleek design includes a superthin, absorbent liner and a sewn-in brief made to move with you. Nike Dri-FIT technology moves sweat away from your skin for quicker evaporation, helping you stay dry and comfortable. **Hip width: 14.5" (size medium).**



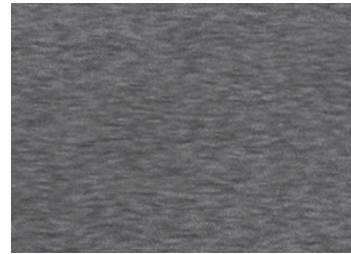
- |                                 |                                   |                          |
|---------------------------------|-----------------------------------|--------------------------|
| <b>010</b> Black/(White)        | <b>091</b> Carbon Heather/(Black) | <b>100</b> White/(Black) |
| <b>419</b> College Navy/(White) |                                   |                          |

**WOMENS NIKE SWOOSH BRA 2.0**  
**CJ5949 \$30.00**

**SIZES:** XS, S, M, L, XL, 2XL  
**FABRIC:** 88% polyester/12% spandex.  
**OFFER DATE:** 07/01/20  
**END DATE:** 04/01/28

Dri-FIT Nike Pro Compression Bra with updated fit and fabrication. Revised body shape for improved support. Bonded seam on front strap, side exterior seam bonded seams. The perfect bra for every activity and motion with its compression fit which provides excellent support. Every detail is carefully considered including the flat and clean finished seams. Swoosh design trademark at center chest.

- |                                 |                                   |                          |
|---------------------------------|-----------------------------------|--------------------------|
| <b>010</b> Black/(White)        | <b>091</b> Carbon Heather/(Black) | <b>100</b> White/(Black) |
| <b>419</b> College Navy/(White) | <b>657</b> University Red/(White) |                          |



FABRIC DETAIL FOR CARBON HEATHER



**WOMENS NIKE PRO ALLOVER MESH TANK**  
**DH4901 \$30.00**

**SIZES:** XS, S, M, L, XL, 2XL  
**FABRIC:** 92% polyester/8% spandex.  
**OFFER DATE:** 01/01/22  
**END DATE:** 04/01/27

The Nike Pro Tank features allover mesh made with at least 75% recycled fibers in a slim fit that lets you move freely. Extra length at the hem keeps you covered while you bend and stretch. Nike Dri-FIT technology moves sweat away from your skin for quicker evaporation, helping you stay dry and comfortable. All over mesh offers optimal breathability to keep you cool while you train. Slim fit for a tailored feel. Customize with your team's colors for a coordinated look.  
**Body width: 16.75", Body length: 24.25" (size medium).**

- |                                    |                                 |
|------------------------------------|---------------------------------|
| <b>010</b> Black/(White)           | <b>060</b> Anthracite/(White)   |
| <b>073</b> Dark Steel Grey/(Black) | <b>100</b> White/(Black)        |
| <b>448</b> Valor Blue/(White)      | <b>545</b> Court Purple/(White) |
| <b>610</b> Team Maroon/(White)     | <b>669</b> Deep Maroon/(White)  |
| <b>716</b> Sundown/(White)         | <b>783</b> Team Gold/(White)    |



BACK VIEW

**WOMENS NIKE PRO ALLOVER MESH SS TOP 2.0**  
**DH4905 \$30.00**

**SIZES:** XS, S, M, L, XL, 2XL  
**FABRIC:** 92% polyester/8% spandex.  
**OFFER DATE:** 01/01/22  
**END DATE:** 04/01/27

The Nike Pro Top prioritizes breathability with allover mesh fabric that's made with at least 75% recycled polyester fibers. Its slim fit closely follows your body's shape to let you move freely, while extra length at the hem keeps you covered front and back. Nike Dri-FIT technology moves sweat away from your skin for quicker evaporation, helping you stay dry and comfortable. Allover mesh helps keep you cool. Customize with your team's colors for a coordinated look.  
**Body width: 17.5", Body length: 24.25" (size medium).**

- |                                 |                                    |
|---------------------------------|------------------------------------|
| <b>010</b> Black/(White)        | <b>073</b> Dark Steel Grey/(Black) |
| <b>100</b> White/(Black)        | <b>341</b> Gorge Green/(White)     |
| <b>419</b> College Navy/(White) | <b>448</b> Valor Blue/(White)      |
| <b>493</b> Game Royal/(White)   | <b>545</b> Court Purple/(White)    |
| <b>610</b> Team Maroon/(White)  | <b>657</b> University Red/(White)  |
| <b>669</b> Deep Maroon/(White)  | <b>716</b> Sundown/(White)         |
| <b>783</b> Team Gold/(White)    |                                    |



**WOMENS NIKE PRO ALLOVER MESH LS TOP 2.0**  
**DH4902 \$35.00**

**SIZES:** XS, S, M, L, XL, 2XL  
**FABRIC:** 92% polyester/8% spandex.  
**OFFER DATE:** 01/01/22  
**END DATE:** 04/01/27

The Nike Pro Top prioritizes breathability with allover mesh fabric that's made with at least 75% recycled polyester fibers. Its slim fit closely follows your body's shape to let you move freely, while extra length at the hem keeps you covered front and back. Nike Dri-FIT technology moves sweat away from your skin for quicker evaporation, helping you stay dry and comfortable. Allover mesh helps keep you cool. Customize with your team's colors for a coordinated look.  
**Body width: 17.5", Body length: 24.25" (size medium).**



- |                                 |                                    |
|---------------------------------|------------------------------------|
| <b>010</b> Black/(White)        | <b>073</b> Dark Steel Grey/(Black) |
| <b>100</b> White/(Black)        | <b>341</b> Gorge Green/(White)     |
| <b>419</b> College Navy/(White) | <b>448</b> Valor Blue/(White)      |
| <b>493</b> Game Royal/(White)   | <b>545</b> Court Purple/(White)    |
| <b>610</b> Team Maroon/(White)  | <b>657</b> University Red/(White)  |
| <b>669</b> Deep Maroon/(White)  | <b>716</b> Sundown/(White)         |
| <b>783</b> Team Gold/(White)    |                                    |

**WOMENS NIKE PRO INTERTWIST TOP 2.0**  
**DH4897 \$55.00**

**SIZES:** XXS, XS, S, M, L, XL, 2XL  
**FABRIC:** 89-90% polyester/10-11% spandex. Material percentages may vary.  
**OFFER DATE:** 01/01/22  
**END DATE:** 04/01/27

The Nike Pro Top is made with soft, comfortable fabric and Dri-FIT technology that helps keep you dry and comfortable. The low-profile mock neck and long sleeves multiply the cozy-factor to keep you going on colder training days. Customize with your team's colors and details for a coordinated look.  
**Body width: 18.25", Body length: 24.25" (size medium).**



- |                                 |                                |
|---------------------------------|--------------------------------|
| <b>010</b> Black/(White)        | <b>100</b> White/(Black)       |
| <b>341</b> Gorge Green/(White)  | <b>419</b> Team Navy/(White)   |
| <b>493</b> Team Royal/(White)   | <b>545</b> Team Purple/(White) |
| <b>657</b> Team Scarlet/(White) | <b>669</b> Deep Maroon/(White) |

**MENS NIKE TECH FLEECE FZ WINDRUNNER HD**  
**FQ1883 \$145.00**

**SIZES:** XS, S, M, L, XL, 2XL, 3XL, ST, MT, LT, XLT, 2XLT, 3XLT  
**FABRIC:** Body/Hood Lining: 53% cotton/47% polyester. Pocket Bag Knuckle Side: 100% cotton.  
**OFFER DATE:** 07/01/24  
**END DATE:** 07/01/28

Layer up in chillier weather in the classic-fitting Nike Windrunner. It updates a time-tested silhouette with our Nike Tech Fleece, giving players iconic style and all the warmth with a surprisingly lightweight feel. Dropped shoulders and paneled sleeve design helps you move with less restriction. Smooth on both sides, Tech Fleece offers premium warmth and an elevated look without adding weight or bulk. Ribbed cuffs help hold the sleeves in place while you move.

**Body width: 23.5", Body length: 27.5" (size large). Tall body length: +1.25", Tall sleeve length: +1.5" (all sizes).**

- |                                 |                                 |                                   |
|---------------------------------|---------------------------------|-----------------------------------|
| <b>010</b> Black/(White)        | <b>060</b> Anthracite/(Black)   | <b>341</b> Gorge Green/(Black)    |
| <b>419</b> College Navy/(Black) | <b>493</b> Game Royal/(Black)   | <b>545</b> Field Purple/(Black)   |
| <b>610</b> Team Maroon/(Black)  | <b>613</b> Team Crimson/(Black) | <b>657</b> University Red/(Black) |
| <b>820</b> Team Orange/(Black)  |                                 |                                   |



**MENS NIKE TECH FLEECE JOGGER**  
**FQ1884 \$125.00**

**SIZES:** XS, S, M, L, XL, 2XL, 3XL, ST, MT, LT, XLT, 2XLT, 3XLT  
**FABRIC:** Body: 53% cotton/47% polyester. Pocket Bag Knuckle Side: 100% cotton.  
**OFFER DATE:** 07/01/24  
**END DATE:** 07/01/28

Layer up in chillier weather in the classic-fitting Nike Joggers. It updates a time-tested silhouette with our Nike Tech Fleece, giving players iconic style and all the warmth with a surprisingly lightweight feel. Smooth on both sides, Tech Fleece offers premium warmth and an elevated look without adding weight or bulk. Tapered fit for a modern, streamlined look. Elastic waistband with drawcord for an adjustable fit.

**Hip width: 22", Inseam length: 28.75" (size large). Offered in +2.25" length options (all sizes).**

- |                                 |                                 |                                   |
|---------------------------------|---------------------------------|-----------------------------------|
| <b>010</b> Black/(White)        | <b>060</b> Anthracite/(Black)   | <b>341</b> Gorge Green/(Black)    |
| <b>419</b> College Navy/(Black) | <b>493</b> Game Royal/(Black)   | <b>545</b> Field Purple/(Black)   |
| <b>610</b> Team Maroon/(Black)  | <b>613</b> Team Crimson/(Black) | <b>657</b> University Red/(Black) |
| <b>820</b> Team Orange/(Black)  |                                 |                                   |



**WOMENS NIKE TEAM TECH FLEECE WINDRUNNER HOODIE FZ DV6737 \$145.00**

**SIZES:** XS, S, M, L, XL, 2XL, ST, MT, LT, XLT, 2XLT  
**FABRIC:** Body/hood lining: 69% cotton/31% polyester. Panels lining: 100% cotton.  
**OFFER DATE:** 05/01/23  
**END DATE:** 07/01/28

Layer up in chillier weather in the classic-fitting Nike Windrunner. It updates a time-tested silhouette with our Nike Tech Fleece, giving you iconic style and all the warmth with a surprisingly lightweight feel. Ribbed cuffs help hold the sleeves in place while you move. Choose from 10 different color combinations to outfit your team.

**Body width: 22.25", Body length: 23" (size medium).**

- |                                 |                                   |                                 |
|---------------------------------|-----------------------------------|---------------------------------|
| <b>010</b> Black/(White)        | <b>060</b> Anthracite/(Black)     | <b>341</b> Gorge Green/(Black)  |
| <b>419</b> College Navy/(Black) | <b>493</b> Game Royal/(Black)     | <b>545</b> Court Purple/(Black) |
| <b>610</b> Team Maroon/(Black)  | <b>657</b> University Red/(Black) | <b>698</b> Team Crimson/(Black) |
| <b>821</b> Team Orange/(Black)  |                                   |                                 |



**WOMENS NIKE TEAM TECH FLEECE PANT HR DV6736 \$125.00**

**SIZES:** XS, S, M, L, XL, 2XL, ST, MT, LT, XLT, 2XLT  
**FABRIC:** Body: 69% cotton/31% polyester. Pocket bags: 100% cotton.  
**OFFER DATE:** 05/01/23  
**END DATE:** 07/01/28

Keep it cozy before and after practice with the classic-fitting Nike High-Rise pants. Our supersoft Tech Fleece gives you all the warmth with hardly any of the weight. Its high-waisted design extends coverage up your core to help keep you moving comfortably and confidently. Vertical zippered pocket secures your belongings. Elastic waistband with drawcord. Choose from 10 different colors to outfit your team.

**Hip width: 20.25", Inseam length: 28" (size medium).**

- |                                 |                                   |                                 |
|---------------------------------|-----------------------------------|---------------------------------|
| <b>010</b> Black/(White)        | <b>060</b> Anthracite/(Black)     | <b>341</b> Gorge Green/(Black)  |
| <b>419</b> College Navy/(Black) | <b>493</b> Game Royal/(Black)     | <b>545</b> Court Purple/(Black) |
| <b>610</b> Team Maroon/(Black)  | <b>657</b> University Red/(Black) | <b>698</b> Team Crimson/(Black) |
| <b>821</b> Team Orange/(Black)  |                                   |                                 |



**MENS NIKE THERMA PULLOVER HOODIE  
CN9473 \$60.00**

**SIZES:** S, M, L, XL, 2XL, 3XL, 4XL  
**FABRIC:** 100% polyester.  
**OFFER DATE:** 07/01/20  
**END DATE:** 01/01/27

The Nike Therma Hoodie features soft, thermal fabric that helps manage your body's natural heat to keep you warm — and performance high when temperatures are low. Ergonomic seams promote a natural range of motion. The scuba hood is adjustable for custom coverage. Pullover design allows for easy on and off. Front pockets.

**Body width: 24", Body length: 29.5" (size large).**

- |                             |                               |                                |
|-----------------------------|-------------------------------|--------------------------------|
| <b>010</b> Black/(White)    | <b>060</b> Anthracite/(White) | <b>341</b> Dark Green/(White)  |
| <b>419</b> Navy/(White)     | <b>493</b> Royal/(White)      | <b>545</b> Purple/(White)      |
| <b>610</b> Cardinal/(White) | <b>657</b> Scarlet/(White)    | <b>669</b> Dark Maroon/(White) |



**MENS NIKE THERMA PANT REGULAR  
CN9483 \$60.00**

**SIZES:** S, M, L, XL, 2XL, 3XL, 4XL  
**FABRIC:** 100% polyester.  
**OFFER DATE:** 07/01/20  
**END DATE:** 01/01/27

Nike Therma Training Pants are made with heat-managing fabric so you can stay warm when the temperature drops. Multiple pockets offer easy-access storage, while the elastic waistband allows for adjustable comfort. The side pockets offer small-item storage. An elastic waistband with drawcord provides an adjustable fit.

**Hip width: 22.25", Inseam length: 31.5" (size large).**

- |                             |                               |                                |
|-----------------------------|-------------------------------|--------------------------------|
| <b>010</b> Black/(White)    | <b>060</b> Anthracite/(White) | <b>341</b> Dark Green/(White)  |
| <b>419</b> Navy/(White)     | <b>493</b> Royal/(White)      | <b>545</b> Purple/(White)      |
| <b>610</b> Cardinal/(White) | <b>657</b> Scarlet/(White)    | <b>669</b> Dark Maroon/(White) |



**MENS NIKE TEAM CLUB CREW  
CJ1614 \$50.00**

**SIZES:** S, M, L, XL, 2XL, 3XL, 4XL, LT, XLT, 2XLT, 3XLT, 4XLT  
**FABRIC:** 80% cotton/20% polyester.  
**OFFER DATE:** 04/01/20  
**END DATE:** 07/01/27

**Body width:** 24.75", **Body length:** 27.75" (size large).  
**Tall body length:** +1.25", **Tall sleeve length:** +1.5" (all sizes).

- |                            |                                |                                      |
|----------------------------|--------------------------------|--------------------------------------|
| <b>010</b> Black/(White)   | <b>060</b> Anthracite/(White)  | <b>063</b> Dark Grey Heather/(White) |
| <b>100</b> White/(Black)   | <b>341</b> Dark Green/(White)  | <b>419</b> Navy/(White)              |
| <b>493</b> Royal/(White)   | <b>545</b> Purple/(White)      | <b>610</b> Cardinal/(White)          |
| <b>657</b> Scarlet/(White) | <b>669</b> Dark Maroon/(White) |                                      |



**MENS NIKE TEAM CLUB PANT  
CJ1616 \$50.00**

**SIZES:** S, M, L, XL, 2XL, 3XL, 4XL, LT, XLT, 2XLT, 3XLT, 4XLT  
**FABRIC:** 80% cotton/20% polyester.  
**OFFER DATE:** 04/01/20  
**END DATE:** 07/01/27

**Hip width:** 23.25", **Inseam length:** 28.25" (size large).  
**Tall inseam length:** +2.25" (all sizes).

- |                            |                                |                                      |
|----------------------------|--------------------------------|--------------------------------------|
| <b>010</b> Black/(White)   | <b>060</b> Anthracite/(White)  | <b>063</b> Dark Grey Heather/(White) |
| <b>100</b> White/(Black)   | <b>341</b> Dark Green/(White)  | <b>419</b> Navy/(White)              |
| <b>493</b> Royal/(White)   | <b>545</b> Purple/(White)      | <b>610</b> Cardinal/(White)          |
| <b>657</b> Scarlet/(White) | <b>669</b> Dark Maroon/(White) |                                      |



**WOMENS NIKE TEAM CLUB PANT**  
**CJ1790 \$50.00**

**SIZES:** XS, S, M, L, XL, 2XL, 3XL, ST, MT, LT, XLT, 2XLT  
**FABRIC:** 80% cotton/20% polyester.  
**OFFER DATE:** 04/01/20  
**END DATE:** 07/01/27

A new silhouette to the staple Club franchise, the Nike Club Joggers combine classic style with soft, brushed-back fleece for all day comfort. The on-trend tapered silhouette aligns with Nike Sportswear. Elastic waistband with drawcord has a snug fit. Elastic jogger cuffs keep the comfort close and let you show off your sneakers. Side-seam pockets. Back pocket with snap closure.

**Hip width: 22.5", Inseam length: 27.5" (size medium). Tall inseam length: +2.25" (all sizes).**

- |                            |                                |                                    |
|----------------------------|--------------------------------|------------------------------------|
| <b>010</b> Black/(White)   | <b>060</b> Anthracite/(White)  | <b>063</b> Dk Grey Heather/(White) |
| <b>100</b> White/(Black)   | <b>341</b> Dark Green/(White)  | <b>419</b> Navy/(White)            |
| <b>493</b> Royal/(White)   | <b>545</b> Purple/(White)      | <b>610</b> Cardinal/(White)        |
| <b>657</b> Scarlet/(White) | <b>669</b> Dark Maroon/(White) |                                    |



**KIDS NIKE TEAM CLUB PANT**  
**CJ1813 \$45.00**

**SIZES:** S, M, L, XL  
**FABRIC:** 80% cotton/20% polyester.  
**OFFER DATE:** 04/01/20  
**END DATE:** 07/01/27

The Nike Club Pants combine classic style with soft fleece for all day comfort. Premium brushed-back fleece is soft, warm and comfortable. Elastic waistband with drawcord has a snug fit. Elastic cuffs let you show off your kicks. **Hip width: 16", Inseam length: 25.75" (size medium).**

- |                            |                                |                                      |
|----------------------------|--------------------------------|--------------------------------------|
| <b>010</b> Black/(White)   | <b>060</b> Anthracite/(White)  | <b>063</b> Dark Grey Heather/(White) |
| <b>100</b> White/(Black)   | <b>341</b> Dark Green/(White)  | <b>419</b> Navy/(White)              |
| <b>493</b> Royal/(White)   | <b>545</b> Purple/(White)      | <b>610</b> Cardinal/(White)          |
| <b>657</b> Scarlet/(White) | <b>669</b> Dark Maroon/(White) |                                      |



**MENS NIKE TEAM CLUB PULLOVER HOODIE  
CJ1611 \$55.00**

**SIZES:** S, M, L, XL, 2XL, 3XL, 4XL, MT, LT, XLT, 2XLT, 3XLT, 4XLT  
**FABRIC:** 80% cotton/20% polyester.  
**OFFER DATE:** 04/01/20 **END DATE:** 07/01/27

**Body width:** 24.75", **Body length:** 27.75" (size large).  
**Tall body length:** +1.25", **Tall sleeve length:** +1.5" (all sizes).

- |                               |                                  |                                      |
|-------------------------------|----------------------------------|--------------------------------------|
| <b>010</b> Black/(White)      | <b>060</b> Anthracite/(White)    | <b>063</b> Dark Grey Heather/(White) |
| <b>100</b> White/(Black)      | <b>249</b> Brown/(White)         | <b>315</b> Kelly Green/(White)       |
| <b>341</b> Dark Green/(White) | <b>419</b> Navy/(White)          | <b>448</b> Light Blue/(White)        |
| <b>493</b> Royal/(White)      | <b>545</b> Purple/(White)        | <b>610</b> Cardinal/(White)          |
| <b>657</b> Scarlet/(White)    | <b>669</b> Dark Maroon/(White)   | <b>716</b> Bright Gold/(Black)       |
| <b>783</b> Vegas Gold/(Black) | <b>802</b> Desert Orange/(White) | <b>820</b> Orange/(White)            |



**WOMENS NIKE TEAM CLUB PULLOVER HOODIE  
CJ1789 \$55.00**

**SIZES:** XS, S, M, L, XL, 2XL, 3XL, ST, MT, LT, XLT, 2XLT  
**FABRIC:** 80% cotton/20% polyester.  
**OFFER DATE:** 04/01/20 **END DATE:** 07/01/27

The Nike Club Hoodie offers warm and soft brushed-back fleece and an adjustable hood to keep you covered when temperatures drop. Updates to the fit give you room to layer and move freely. Elastic cuffs and hem for a snug fit. **Body width:** 21.5", **Body length:** 24" (size medium). **Tall body length:** +1.25", **Tall sleeve length:** +1.5" (all sizes).

- |                               |                                  |                                      |
|-------------------------------|----------------------------------|--------------------------------------|
| <b>010</b> Black/(White)      | <b>060</b> Anthracite/(White)    | <b>063</b> Dark Grey Heather/(White) |
| <b>100</b> White/(Black)      | <b>249</b> Brown/(White)         | <b>315</b> Kelly Green/(White)       |
| <b>341</b> Dark Green/(White) | <b>419</b> Navy/(White)          | <b>448</b> Light Blue/(White)        |
| <b>493</b> Royal/(White)      | <b>545</b> Purple/(White)        | <b>610</b> Cardinal/(White)          |
| <b>657</b> Scarlet/(White)    | <b>669</b> Dark Maroon/(White)   | <b>716</b> Bright Gold/(Black)       |
| <b>783</b> Vegas Gold/(Black) | <b>802</b> Desert Orange/(White) | <b>820</b> Orange/(White)            |



**KIDS NIKE TEAM CLUB PULLOVER HOODIE  
CJ1773 \$45.00**

**SIZES:** S, M, L, XL  
**FABRIC:** 80% cotton/20% polyester.  
**OFFER DATE:** 04/01/20 **END DATE:** 07/01/27

The Nike Club Hoodie offers warm and soft brushed-back fleece and an adjustable hood to keep you covered when temperatures drop. Updates to the fit give you room to layer and move freely. Elastic cuffs and hem for a snug fit. **Body width:** 17.25", **Body length:** 21.5" (size medium).

- |                               |                                  |                                      |
|-------------------------------|----------------------------------|--------------------------------------|
| <b>010</b> Black/(White)      | <b>060</b> Anthracite/(White)    | <b>063</b> Dark Grey Heather/(White) |
| <b>100</b> White/(Black)      | <b>249</b> Brown/(White)         | <b>315</b> Kelly Green/(White)       |
| <b>341</b> Dark Green/(White) | <b>419</b> Navy/(White)          | <b>448</b> Light Blue/(White)        |
| <b>493</b> Royal/(White)      | <b>545</b> Purple/(White)        | <b>610</b> Cardinal/(White)          |
| <b>657</b> Scarlet/(White)    | <b>669</b> Dark Maroon/(White)   | <b>716</b> Bright Gold/(Black)       |
| <b>783</b> Vegas Gold/(Black) | <b>802</b> Desert Orange/(White) | <b>820</b> Orange/(White)            |



**MENS NIKE DRI-FIT ELEMENT 1/2-ZIP TOP  
DH4949 \$75.00**

**SIZES:** S, M, L, XL, 2XL, 3XL  
**FABRIC:** 88% polyester/12% spandex.  
**OFFER DATE:** 01/01/22  
**END DATE:** 01/01/26

A running favorite returns! Soft fabric-made with at least 75% recycled polyester fibers—and sweat-wicking technology help keep you comfortable on your runs. The Nike Dri-FIT Element Top delivers versatility with a 1/2-zip design that you can layer or wear solo and thumbholes for extending your sleeves' warmth. Customize the color and details for a team-right look.  
**Body width: 22.25", Body length: 29" (size large).**

- |  |                                    |
|--|------------------------------------|
| <b>010</b> Black/(White)                   | <b>011</b> Black/Heather/(White)   |
| <b>052</b> Team Blue Grey/Heather/(Black)  | <b>060</b> Team Anthracite/(White) |
| <b>061</b> Team Anthracite/Heather/(White) | <b>341</b> Team Dark Green/(White) |
| <b>342</b> Team Dark Green/Heather/(White) | <b>419</b> Team Navy/(White)       |
| <b>420</b> Team Navy/Heather/(White)       | <b>493</b> Team Royal/(White)      |
| <b>494</b> Team Royal/Heather/(White)      | <b>657</b> Team Scarlet/(White)    |
| <b>658</b> Team Scarlet/Heather/(White)    |                                    |



**WOMENS NIKE DRI-FIT ELEMENT 1/2-ZIP TOP  
DH4951 \$75.00**

**SIZES:** XS, S, M, L, XL, 2XL  
**FABRIC:** 88% polyester/12% spandex.  
**OFFER DATE:** 01/01/22  
**END DATE:** 01/01/26

A running favorite returns! Soft fabric-made with at least 75% recycled polyester fibers—and sweat-wicking technology help keep you comfortable on your runs. The Nike Dri-FIT Element Top delivers versatility with a 1/2-zip design that you can layer or wear solo and thumbholes for extending your sleeves' warmth. Customize the color and details for a team-right look.  
**Body width: 20.25", Body length: 25.5" (size medium).**

- |  |                                    |
|--|------------------------------------|
| <b>010</b> Black/(White)                   | <b>011</b> Black/Heather/(White)   |
| <b>052</b> Team Blue Grey/Heather/(Black)  | <b>060</b> Team Anthracite/(White) |
| <b>061</b> Team Anthracite/Heather/(White) | <b>341</b> Team Dark Green/(White) |
| <b>342</b> Team Dark Green/Heather/(White) | <b>419</b> Team Navy/(White)       |
| <b>420</b> Team Navy/Heather/(White)       | <b>493</b> Team Royal/(White)      |
| <b>494</b> Team Royal/Heather/(White)      | <b>657</b> Team Scarlet/(White)    |
| <b>658</b> Team Scarlet/Heather/(White)    |                                    |



**MENS NIKE TEAM LEGEND LS TEE**  
**DV7298 \$32.00**

**SIZES:** S, M, L, XL, 2XL, 3XL, 4XL **FABRIC:** Body: 100% polyester. **OFFER DATE:** 04/01/23

Dri-FIT fabric wicks away sweat to help keep you comfortable and dry. Long-sleeve construction is ideal for a variety of training conditions. Neck tape added for durability and comfort. Swoosh design trademark at upper left chest. **Body width: 22.25", Body length: 29" (size large).**

**Part of Tee/Fleece Embellishment Program.**

- |   |  |                                       |
|---|--|---------------------------------------|
| <b>010</b> Black/(Cool Grey)                    | <b>091</b> Carbon Heather/(Black)        | <b>100</b> White/(Cool Grey)          |
| <b>249</b> Dark Cinder/(Cool Grey)              | <b>315</b> Apple Green/(Cool Grey)       | <b>341</b> Gorge Green/(Cool Grey)    |
| <b>419</b> College Navy/(Cool Grey)             | <b>448</b> Valor Blue/(Cool Grey)        | <b>493</b> Game Royal/(Cool Grey)     |
| <b>545</b> Court Purple/(Cool Grey)             | <b>610</b> Team Maroon/(Cool Grey)       | <b>613</b> Team Crimson/(Cool Grey)   |
| <b>653</b> Shy Pink/(Cool Grey) <i>NEW</i>      | <b>657</b> University Red/(Cool Grey)    | <b>669</b> Deep Maroon/(Cool Grey)    |
| <b>700</b> Yellow Strike/(Cool Grey) <i>NEW</i> | <b>716</b> Sundown/(Cool Grey)           | <b>783</b> Team Gold/(Cool Grey)      |
| <b>802</b> Desert Orange/(Cool Grey)            | <b>813</b> University Orange/(Cool Grey) | <b>873</b> Bright Ceramic/(Cool Grey) |



**WOMENS NIKE LEGEND LS TEE**  
**DV7311 \$32.00**

**SIZES:** XS, S, M, L, XL, XXL **FABRIC:** 100% polyester. **OFFER DATE:** 04/01/23

Dri-FIT fabric wicks away sweat to help keep you comfortable and dry. Long-sleeve construction is ideal for a variety of training conditions. Neck tape added for durability and comfort. Swoosh design trademark at upper left chest. **Body width: 20.25", Body length: 24.5" (size medium).**

**Part of Tee/Fleece Embellishment Program.**

- |   |  |                                       |
|---|--|---------------------------------------|
| <b>010</b> Black/(Cool Grey)                    | <b>091</b> Carbon Heather/(Black)        | <b>100</b> White/(Cool Grey)          |
| <b>249</b> Dark Cinder/(Cool Grey)              | <b>315</b> Apple Green/(Cool Grey)       | <b>341</b> Gorge Green/(Cool Grey)    |
| <b>419</b> College Navy/(Cool Grey)             | <b>448</b> Valor Blue/(Cool Grey)        | <b>493</b> Game Royal/(Cool Grey)     |
| <b>545</b> Court Purple/(Cool Grey)             | <b>610</b> Team Maroon/(Cool Grey)       | <b>613</b> Team Crimson/(Cool Grey)   |
| <b>653</b> Shy Pink/(Cool Grey)                 | <b>657</b> University Red/(Cool Grey)    | <b>669</b> Deep Maroon/(Cool Grey)    |
| <b>700</b> Yellow Strike/(Cool Grey) <i>NEW</i> | <b>716</b> Sundown/(Cool Grey)           | <b>783</b> Team Gold/(Cool Grey)      |
| <b>802</b> Desert Orange/(Cool Grey)            | <b>813</b> University Orange/(Cool Grey) | <b>873</b> Bright Ceramic/(Cool Grey) |



**KIDS NIKE LEGEND LONG SLEEVE TEE**  
**DV7315 \$28.00**

**SIZES:** S, M, L, XL **FABRIC:** Body: 100% polyester. **OFFER DATE:** 04/01/23

Dri-FIT fabric wicks away sweat to help keep you comfortable and dry. Long-sleeve construction is ideal for a variety of training conditions. Neck tape added for durability and comfort. Swoosh design trademark at upper left chest. **Body width: 16.5", Body length: 23.25" (size medium).**

**Part of Tee/Fleece Embellishment Program.**

- |                                      |  |                                       |
|--------------------------------------|--|---------------------------------------|
| <b>010</b> Black/(Cool Grey)         | <b>091</b> Carbon Heather/(Black)        | <b>100</b> White/(Cool Grey)          |
| <b>249</b> Dark Cinder/(Cool Grey)   | <b>341</b> Gorge Green/(Cool Grey)       | <b>419</b> College Navy/(Cool Grey)   |
| <b>448</b> Valor Blue/(Cool Grey)    | <b>493</b> Game Royal/(Cool Grey)        | <b>545</b> Court Purple/(Cool Grey)   |
| <b>610</b> Team Maroon/(Cool Grey)   | <b>613</b> Team Crimson/(Cool Grey)      | <b>657</b> University Red/(Cool Grey) |
| <b>669</b> Deep Maroon/(Cool Grey)   | <b>716</b> Sundown/(Cool Grey)           | <b>783</b> Team Gold/(Cool Grey)      |
| <b>802</b> Desert Orange/(Cool Grey) | <b>813</b> University Orange/(Cool Grey) | <b>873</b> Bright Ceramic/(Cool Grey) |



**MENS NIKE TEAM LEGEND SS TEE**  
**DV7299 \$28.00**

**SIZES:** S, M, L, XL, 2XL, 3XL, 4XL **FABRIC:** Body: 100% polyester. **OFFER DATE:** 04/01/23

Dri-FIT fabric wicks away sweat to help keep you comfortable and dry. Short-sleeve construction is ideal for a variety of training conditions. Neck tape added for durability and comfort. Swoosh design trademark at upper left chest. **Body width: 22.25", Body length: 29" (size large).**

**Part of Tee/Fleece Embellishment Program.**

- |   |  |                                       |
|---|--|---------------------------------------|
| <b>010</b> Black/(Cool Grey)                    | <b>091</b> Carbon Heather/(Black)        | <b>100</b> White/(Cool Grey)          |
| <b>249</b> Dark Cinder/(Cool Grey)              | <b>315</b> Apple Green/(Cool Grey)       | <b>341</b> Gorge Green/(Cool Grey)    |
| <b>419</b> College Navy/(Cool Grey)             | <b>448</b> Valor Blue/(Cool Grey)        | <b>493</b> Game Royal/(Cool Grey)     |
| <b>545</b> Court Purple/(Cool Grey)             | <b>610</b> Team Maroon/(Cool Grey)       | <b>613</b> Team Crimson/(Cool Grey)   |
| <b>653</b> Shy Pink/(Cool Grey) <i>NEW</i>      | <b>657</b> University Red/(Cool Grey)    | <b>669</b> Deep Maroon/(Cool Grey)    |
| <b>700</b> Yellow Strike/(Cool Grey) <i>NEW</i> | <b>716</b> Sundown/(Cool Grey)           | <b>783</b> Team Gold/(Cool Grey)      |
| <b>802</b> Desert Orange/(Cool Grey)            | <b>813</b> University Orange/(Cool Grey) | <b>873</b> Bright Ceramic/(Cool Grey) |



**WOMENS NIKE LEGEND SS TEE**  
**DV7312 \$28.00**

**SIZES:** XS, S, M, L, XL, XXL **FABRIC:** 100% polyester. **OFFER DATE:** 04/01/23

Dri-FIT fabric wicks away sweat to help keep you comfortable and dry. Short-sleeve construction is ideal for a variety of training conditions. Neck tape added for durability and comfort. Swoosh design trademark at upper left chest. **Body width: 20.25", Body length: 24.5" (size medium).**

**Part of Tee/Fleece Embellishment Program.**

- |                                      |  |                                       |
|--------------------------------------|--|---------------------------------------|
| <b>010</b> Black/(Cool Grey)         | <b>091</b> Carbon Heather/(Black)        | <b>100</b> White/(Cool Grey)          |
| <b>249</b> Dark Cinder/(Cool Grey)   | <b>315</b> Apple Green/(Cool Grey)       | <b>341</b> Gorge Green/(Cool Grey)    |
| <b>419</b> College Navy/(Cool Grey)  | <b>448</b> Valor Blue/(Cool Grey)        | <b>493</b> Game Royal/(Cool Grey)     |
| <b>545</b> Court Purple/(Cool Grey)  | <b>610</b> Team Maroon/(Cool Grey)       | <b>613</b> Team Crimson/(Cool Grey)   |
| <b>653</b> Shy Pink/(Cool Grey)      | <b>657</b> University Red/(Cool Grey)    | <b>669</b> Deep Maroon/(Cool Grey)    |
| <b>700</b> Yellow Strike/(Cool Grey) | <b>716</b> Sundown/(Cool Grey)           | <b>783</b> Team Gold/(Cool Grey)      |
| <b>802</b> Desert Orange/(Cool Grey) | <b>813</b> University Orange/(Cool Grey) | <b>873</b> Bright Ceramic/(Cool Grey) |



**KIDS NIKE LEGEND SS TEE**  
**DV7317 \$23.00**

**SIZES:** S, M, L, XL **FABRIC:** Body: 100% polyester. **OFFER DATE:** 04/01/23

Dri-FIT fabric wicks away sweat to help keep you comfortable and dry. Short-sleeve construction is ideal for a variety of training conditions. Neck tape added for durability and comfort. Swoosh design trademark at upper left chest. **Body width: 16.5", Body length: 23.25" (size medium).**

**Part of Tee/Fleece Embellishment Program.**

- |   |  |                                       |
|---|--|---------------------------------------|
| <b>010</b> Black/(Cool Grey)                    | <b>091</b> Carbon Heather/(Black)        | <b>100</b> White/(Cool Grey)          |
| <b>249</b> Dark Cinder/(Cool Grey)              | <b>315</b> Apple Green/(Cool Grey)       | <b>341</b> Gorge Green/(Cool Grey)    |
| <b>419</b> College Navy/(Cool Grey)             | <b>448</b> Valor Blue/(Cool Grey)        | <b>493</b> Game Royal/(Cool Grey)     |
| <b>545</b> Court Purple/(Cool Grey)             | <b>610</b> Team Maroon/(Cool Grey)       | <b>613</b> Team Crimson/(Cool Grey)   |
| <b>653</b> Shy Pink/(Cool Grey) <i>NEW</i>      | <b>657</b> University Red/(Cool Grey)    | <b>669</b> Deep Maroon/(Cool Grey)    |
| <b>700</b> Yellow Strike/(Cool Grey) <i>NEW</i> | <b>716</b> Sundown/(Cool Grey)           | <b>783</b> Team Gold/(Cool Grey)      |
| <b>802</b> Desert Orange/(Cool Grey)            | <b>813</b> University Orange/(Cool Grey) | <b>873</b> Bright Ceramic/(Cool Grey) |



**MENS NIKE TEAM DRI-FIT FLEX WOVEN SHORT  
DJ8686 \$37.00**

**SIZES:** S, M, L, XL, 2XL, 3XL, 4XL  
**FABRIC:** 100% polyester.  
**OFFER DATE:** 04/01/22 **END DATE:** 04/01/26

The Nike Dri-FIT Flex Shorts are made to keep you moving during high-intensity training. Nike Flex fabric stretches with every move, while vents at the hems are ideal for deep bends like lunges and squats. This product is made with at least 50% recycled polyester fibers and can be customized for a team-right look.  
**Hip width: 22.5" (size large), Inseam length: 8.25" (all sizes).**

- |                                     |                                     |                                    |
|-------------------------------------|-------------------------------------|------------------------------------|
| <b>010</b> Black/(White)            | <b>060</b> Team Anthracite/(White)  | <b>249</b> Team Brown/(White)      |
| <b>315</b> Apple Green/(White)      | <b>341</b> Team Dark Green/(White)  | <b>419</b> Team Navy/(White)       |
| <b>448</b> Team Light Blue/(White)  | <b>493</b> Team Royal/(White)       | <b>545</b> Team Purple/(White)     |
| <b>610</b> Team Cardinal/(White)    | <b>613</b> Team Crimson/(White)     | <b>657</b> Team Scarlet/(White)    |
| <b>669</b> Team Dark Maroon/(White) | <b>716</b> Team Bright Gold/(Black) | <b>783</b> Team Vegas Gold/(Black) |
| <b>802</b> Desert Orange/(White)    | <b>820</b> Team Orange/(White)      | <b>873</b> Bright Ceramic/(White)  |



**WOMENS NIKE TEAM DRI-FIT FLEX 2-1 SHORT  
DJ8680 \$47.00**

**SIZES:** XS, S, M, L, XL, 2XL  
**FABRIC:** need  
**OFFER DATE:** 04/01/22 **END DATE:** 04/01/26

The Nike Dri-FIT Flex Shorts have a tight, stretchy base layer underneath a loose, woven outer layer. They give you plenty of flexibility and have sweat-wicking technology to keep you dry and comfortable. Customize the colors for a team look you can be proud of. The pocket on the right is big enough to hold a phone.  
**Hip width: 22.25", Inseam length: 3.5" (size medium).**

- |                                    |                                    |                               |
|------------------------------------|------------------------------------|-------------------------------|
| <b>010</b> Black/(White)           | <b>060</b> Team Anthracite/(White) | <b>100</b> White/(Black)      |
| <b>341</b> Team Dark Green/(White) | <b>419</b> Team Navy/(White)       | <b>493</b> Team Royal/(White) |
| <b>545</b> Team Purple/(White)     | <b>657</b> Team Scarlet/(White)    |                               |



**KIDS NIKE TEAM DRI-FIT FLEX WOVEN SHORT  
POCKETS  
FD6682 \$32.00**

**SIZES:** XS, S, M, L, XL  
**FABRIC:** 100% polyester.  
**OFFER DATE:** 04/01/24 **END DATE:** 04/01/26

The Nike Dri-FIT Flex Shorts are made to keep you moving during high-intensity training. Nike Flex fabric stretches with every move, while vents at the hems are ideal for deep bends like lunges and squats. Customize the colors for a team-right look. With pockets.  
**Hip width: 17.25", Inseam length: 7" (size medium).**

- |                                 |                                   |                                 |
|---------------------------------|-----------------------------------|---------------------------------|
| <b>010</b> Black/(White)        | <b>060</b> Anthracite/(White)     | <b>341</b> Gorge Green/(White)  |
| <b>419</b> College Navy/(White) | <b>493</b> Game Royal/(White)     | <b>545</b> Field Purple/(White) |
| <b>610</b> Team Maroon/(White)  | <b>657</b> University Red/(White) | <b>669</b> Deep Maroon/(White)  |



**NEW**  
**NIKE TEAM FILL PARKA**  
**HF7143 \$250.00**

**SIZES:** S, M, L, XL, 2XL, 3XL  
**FABRIC:** Body: 100% nylon. Lining: 100% polyester. Fill: 100% polyester.  
**OFFER DATE:** 04/01/26  
**END DATE:** 01/01/30

Water-repellent woven fabric and polyester fill work together to help keep players and coaches warm in cold, wet conditions. • Adjustment pull on back of hood provide coverage options. • Zippered hand pockets provide secure storage for game essentials. • Storm flap secures zipper closure with bottom and top snaps. • Adjustable cuffs provide quick adjustments to keep out the cold. • Loose fit makes it easy to move and layer without restriction. **Body width: 27", Body length: 34.5" (size large).**

- 010** Black/(White)      **060** Team Anthracite/(White)      **419** Team Navy/(White)



**MENS NIKE TEAM DOWN FILL PARKA**  
**DJ6526 \$245.00**

**SIZES:** S, M, L, XL, 2XL, 3XL  
**FABRIC:** 100% polyester.  
**OFFER DATE:** 07/01/21  
**END DATE:** 04/01/26

Stay warm, dry, and protected, the 550 down parka is completely integrated with Storm-FIT shell for maximum protection in the elements. Proven winner in the coldest of elements and on the sideline. Seam sealed full front zipper with hidden side zippered pockets. **Body width: 27", Body length: 34.5" (size large).**

- 010** Black/(White)      **060** Team Anthracite/(White)      **419** Team Navy/(White)



**NEW**  
**NIKE TEAM WATERPROOF RAIN JACKET**  
**HF7146 \$200.00**

**SIZES:** XS, S, M, L, XL, 2XL, 3XL, 4XL  
**FABRIC:** Face of fabric: 100% polyester. Back of fabric: 100% nylon.  
**OFFER DATE:** 04/01/26  
**END DATE:** 01/01/30

Seam-sealed waterproof fabric keeps players and coaches dry in wet conditions. • Removable hood and adjustment pull on back of hood provide coverage options. • Zippered or open hand pockets provide quick storage for game essentials. • Loose fit makes it easy to move and layer without restriction.  
**Body width: 26.5", Body length: 29.75" (size large).**

- 
- 010 Black/(White)
  - 060 Team Anthracite/(White)
  - 419 Team Navy/(White)



**NEW**  
**NIKE TEAM WATERPROOF RAIN PANT**  
**HF7136 \$150.00**

**SIZES:** XS, S, M, L, XL, 2XL, 3XL, 4XL  
**FABRIC:** Face of fabric: 100% polyester. Back of fabric: 100% nylon.  
**OFFER DATE:** 04/01/26  
**END DATE:** 01/01/30

Seam-sealed waterproof fabric keeps players and coaches dry in wet conditions. • Zippered or open hand and back pockets provide quick storage for game essentials. • Ankle snap provides easy on and off and quick fit adjustments. • Standard fit for a relaxed look and feel.  
**Hip width: 24", Inseam length: 31.5" (size large).**

- 
- 010 Black/(White)
  - 060 Team Anthracite/(White)
  - 419 Team Navy/(White)



**MENS NIKE WATERPROOF JACKET**  
**DA4967 \$205.00**

**SIZES:** S, M, L, XL, 2XL, 3XL, 4XL  
**FABRIC:** 100% polyester.  
**OFFER DATE:** 07/01/21  
**END DATE:** 04/01/26

Storm-FIT 5 fabric provides protection from the elements. Bonded seams repel wind and rain. Mesh lining in jacket and center back perforated vent system provides breathability. Zip pockets on jacket for secure storage. Reflective chevron and Swoosh for an elevated design. Adjustable hood for ultimate coverage from the elements. Toggle at hem and hook-and-loop tab at cuff for adjustability. Standard fit for ultimate comfort for the modern athlete. Packable pocket technology with ability to place full jacket into pocket for compact storage.  
**Body width: 25" , Body length: 30.5" (size large).**

- 010** Black                      **060** Team Anthracite/Black



**MENS NIKE WATERPROOF PANT**  
**DA4984 \$145.00**

**SIZES:** S, M, L, XL, 2XL, 3XL, 4XL  
**FABRIC:** 100% polyester.  
**OFFER DATE:** 07/01/21  
**END DATE:** 04/01/26

Storm-FIT 10 fabric provides protection from the elements. Bonded seams repel wind and rain. Mesh lining in pant provides breathability. Elastic waistband with interior drawcord on pants for an adjustable fit. Zipper at pant hem provides ventilation and easy on/off. Snaps at hem for adjusting the inseam/outseam length, can be shortened up to 1¾". Standard fit for ultimate comfort for the modern athlete.  
**Hip width: 23.25" , Inseam length: 31.5" (size large).**

- 010** Black                      **060** Team Anthracite/Black



**NIKE FUTSAL PRO  
DH1992 \$42.00**

**FABRIC:** 60% rubber/15% polyurethane/13% polyester/12% EVA.  
**OFFER DATE:** 04/01/24

The Nike Futsal Pro Soccer Ball provides exceptional touch and control for the small-sided game. It has a textured casing with high-contrast graphics making it easy to track across the pitch.



**100** White/Volt/(Silver)

**NIKE CLUB TEAM BALL BAG - 160L  
BA5200 \$52.00**

**FABRIC:** 88% polyester/12% nylon. **OFFER DATE:** 04/01/24

The Nike Club Team Ball Bag offers plenty of room to store all of the squad's soccer balls to and from practice. It features a flat bottom to keep it upright and steady, while padded straps give you hassle-free hauling. Adjustable shoulder straps are padded for comfortable carrying. Drawcord closure lets you quickly access your gear. Lightweight mesh promotes ventilation.



**010** Black/Black/(White)

**NIKE ACADEMY TEAM BACKPACK 2.3  
DVO761 \$57.00**

**SIZES:** Misc **OFFER DATE:** 07/01/22 **END DATE:** 12/31/26

Tough 600D polyester • Large dual-zippered main compartment • Zippered wet/dry compartment • Laser perforations help enhance ventilation • Haul loop at top for alternative carry option • Padded curved shoulder straps • Padded back panel • Mesh side pocket for water bottle storage • Front pocket holds up to a size 5 ball  
**DIMENSIONS:** 19" H x 14" W x 6.5" D



**011** Black/Black/(White)

**065** Cool Grey/Cool Grey/(White)

**410** Midnight Navy/Midnight Navy/(White)

**480** Game Royal/Game Royal/(White)

**657** University Red/University Red/(White)

**NIKE BRASILIA LARGE DUFFEL 9.5**  
**DO9193 \$52.00**

SIZES: Misc  
 OFFER DATE: 07/01/22  
 END DATE: 07/01/26

Tough 600D polyester • Durable 300D polyester • Detachable shoulder strap • Ventilated shoe or wet/dry storage • Secure zip pocket • Limited lifetime guarantee • Screened Swoosh design trademark  
 DIMENSIONS: 28" L x 12" W x 14" H

010 Black/Black/(White)



**NIKE BRASILIA BACKPACK XL 9.5**  
**DM3975 \$57.00**

SIZES: Misc  
 OFFER DATE: 07/01/22  
 END DATE: 07/01/26

Tough 600D polyester • Durable 300D polyester • Multiple pockets for organization • Water bottle pocket • Screened Swoosh branding  
 DIMENSIONS: 19" H x 13" W x 10.5" D

010 Black/Black/(White)      068 Iron Grey/Black/(White)      410 Midnight Navy/Black/(White)



**NIKE BRASILIA MEDIUM BACKPACK 9.5**  
**DH7709 \$45.00**

SIZES: Misc  
 OFFER DATE: 07/01/22  
 END DATE: 07/01/26

Durable, heavyweight 600D polyester • Large zippered main compartment • Medium-sized zippered compartment • Interior small-item zippered pocket • Separate, padded internal sleeve • Padded shoulder strap • Side mesh pockets • Limited lifetime guarantee • Screened Swoosh design trademark  
 DIMENSIONS: 18" H x 12" W x 7" D

010 Black/Black/(White)      068 Iron Grey/Black/(White)      410 Midnight Navy/Black/(White)



**NIKE BRASILIA MEDIUM DUFFEL 9.5**  
**DH7710 \$42.00**

SIZES: Misc  
 OFFER DATE: 07/01/22  
 END DATE: 07/01/26

Tough 600D polyester • Durable 300D polyester • Detachable shoulder strap • Ventilated shoe or wet/dry storage • Secure zip pocket • Limited lifetime guarantee • Screened Swoosh design trademark  
 DIMENSIONS: 24" L x 11" W x 13" H

010 Black/Black/(White)      068 Iron Grey/Black/(White)      410 Midnight Navy/Black/(White)



**NIKE BRASILIA SMALL DUFFEL 9.5**  
**DM3976 \$37.00**

SIZES: Misc  
 OFFER DATE: 07/01/22  
 END DATE: 07/01/26

Tough 600D polyester • Durable 300D polyester • Detachable shoulder strap • Ventilated shoe or wet/dry storage • Secure zip pocket • Limited lifetime guarantee • Screened Swoosh design trademark  
 DIMENSIONS: 20" L x 10" W x 11" H

010 Black/Black/(White)      068 Iron Grey/Black/(White)      410 Midnight Navy/Black/(White)



**NIKE BRASILIA XSMALL DUFFEL 9.5**  
**DM3977 \$32.00**

SIZES: Misc  
 OFFER DATE: 07/01/22  
 END DATE: 07/01/26

Tough 600D polyester • Durable 300D polyester • Detachable shoulder strap • Ventilated shoe or wet/dry storage • Secure zip pocket • Limited lifetime guarantee • Screened Swoosh design trademark  
 DIMENSIONS: 20" L x 10" W x 11" H

010 Black/Black/(White)      410 Midnight Navy/Black/(White)



**NIKE BRASILIA SHOE BAG 9.5**  
**DM3982 \$22.00**

SIZES: Misc  
 OFFER DATE: 07/01/22  
 END DATE: 07/01/26

The Nike Utility Shoe Tote helps keep your shoes separate from the rest of your gear between home, work and the gym. The ventilated design is made of tough fabric and includes an outside pocket and handles for convenience.  
 DIMENSIONS: 12" L x 6" W x 7" H

010 Black/Black/(White)



**NIKE BRASILIA DRAWSTRING 9.5**  
**DM3978 \$18.00**

SIZES: Misc  
 OFFER DATE: 07/01/22  
 END DATE: 07/01/26

Tough 600D polyester • Durable 300D polyester • Drawstring closure / Easy access to contents • Zippered front pocket • Screened Swoosh branding  
 DIMENSIONS: 20" H x 15" W x 2" D

010 Black/Black/(White)      068 Iron Grey/Black/(White)      410 Midnight Navy/Black/(White)



**NIKE EVERYDAY PLUS CUSHION CREW 3PPK  
SX6888 \$18.00**

ORDERS ACCEPTED IN INCREMENTS OF 6 PPK UNITS ONLY

**SIZES:** S, M, L, XL  
**FABRIC:** 60% polyester/26% nylon/12% cotton/2% spandex.  
**OFFER DATE:** 01/01/19

Cushioned terry foot / Comfort and shock absorption • Dri-FIT fabric / Wicks away moisture to keep feet dry and cool • Arch support / Snug, secure fit • Anatomical left and right / Superior fit and cushioning  
**SIZE:** XL sock = M 12-15 shoe size; L sock = M 8-12 shoe size, W 10-13 shoe size; M sock = M 6-8 shoe size, W 6-10 shoe size.

**010** Black/(White)                      **100** White/(Black)



**NIKE EVERYDAY PLUS CUSHION ANKLE 3PPK  
SX6890 \$18.00**

ORDERS ACCEPTED IN INCREMENTS OF 6 PPK UNITS ONLY

**SIZES:** S, M, L, XL  
**FABRIC:** 53% polyester/23% nylon/22% cotton/2% spandex  
**OFFER DATE:** 01/01/19

Cushioned, medium-density padding / Impact absorption • Dri-FIT fabric / Wicks away moisture to keep feet dry and cool • Arch support / Snug, secure fit • Anatomical left and right / Superior fit and cushioning  
**SIZE:** XL sock = M 12-15 shoe size; L sock = M 8-12 shoe size, W 10-13 shoe size; M sock = M 6-8 shoe size, W 6-10 shoe size.

**010** Black/(White)                      **100** White/(Black)



**NIKE EVERYDAY PLUS CUSHION LOW 3PPK  
SX7040 \$18.00**

ORDERS ACCEPTED IN INCREMENTS OF 6 PPK UNITS ONLY

**SIZES:** S, M, L, XL  
**FABRIC:** 60% polyester/26% nylon/12% cotton/2% spandex  
**OFFER DATE:** 01/01/19

Cushioned terry foot / Comfort and shock absorption • Dri-FIT fabric / Wicks away moisture to keep feet dry and cool • Arch support / Snug, secure fit • Anatomical left and right / Superior fit and cushioning  
**SIZE:** XL sock = M 12-15 shoe size; L sock = M 8-12 shoe size, W 10-13 shoe size; M sock = M 6-8 shoe size, W 6-10 shoe size.

**010** Black/(White)                      **100** White/(Black)



**NIKE EVERYDAY PLUS CUSHION  
NO SHOW 3PPK SX6889 \$18.00**

ORDERS ACCEPTED IN INCREMENTS OF 6 PPK UNITS ONLY

**SIZES:** S, M, L, XL  
**FABRIC:** 53% polyester/23% nylon/22% cotton/2% spandex.  
**OFFER DATE:** 01/01/19

Cushioned, medium-density padding / Impact absorption • Dri-FIT fabric / Wicks away moisture to keep feet dry and cool • Arch support / Snug, secure fit • Anatomical left and right / Superior fit and cushioning  
**SIZE:** XL sock = M 12-15 shoe size; L sock = M 8-12 shoe size, W 10-13 shoe size; M sock = M 6-8 shoe size, W 6-10 shoe size.

**010** Black/(White)                      **100** White/(Black)



# CONTACT INFORMATION

## NA SOCCER SPECIALTY SR. PARTNER REPS

**LAURIE ARCHAMBAULT**  
**310-941-7007**  
laurie.arch@nike.com  
SOUTHERN CALIFORNIA

**ROBERT BOYLE**  
**971-727-5065**  
robert.boyle@nike.com  
SOCCER.COM

**DANIEL WITHROW**  
**248-935-7606**  
daniel.withrow@nike.com  
PNW, NORTHERN CALIFORNIA

**TIM BLAKE**  
**630-263-2671**  
tim.blake@nike.com  
IL, MN, WI, IN, MI, LA

**MIKE SURBER**  
**860-227-9462**  
mike.surber@nike.com  
NEW ENGLAND: CT, MA, RI,  
ME, NH, VT, NY

**RUSSELL PATMORE**  
**404-668-1938**  
russell.patmore@nike.com  
SOCCER POST: INCLUDING  
NC, SC, GA, FL, TN, AL, MS

**TIM STORK**  
**515-238-3059**  
tim.stork@nike.com  
HEARTLAND: CO, WY, ND, SD,  
NE, KS, OK, TX, IA, MO, OH

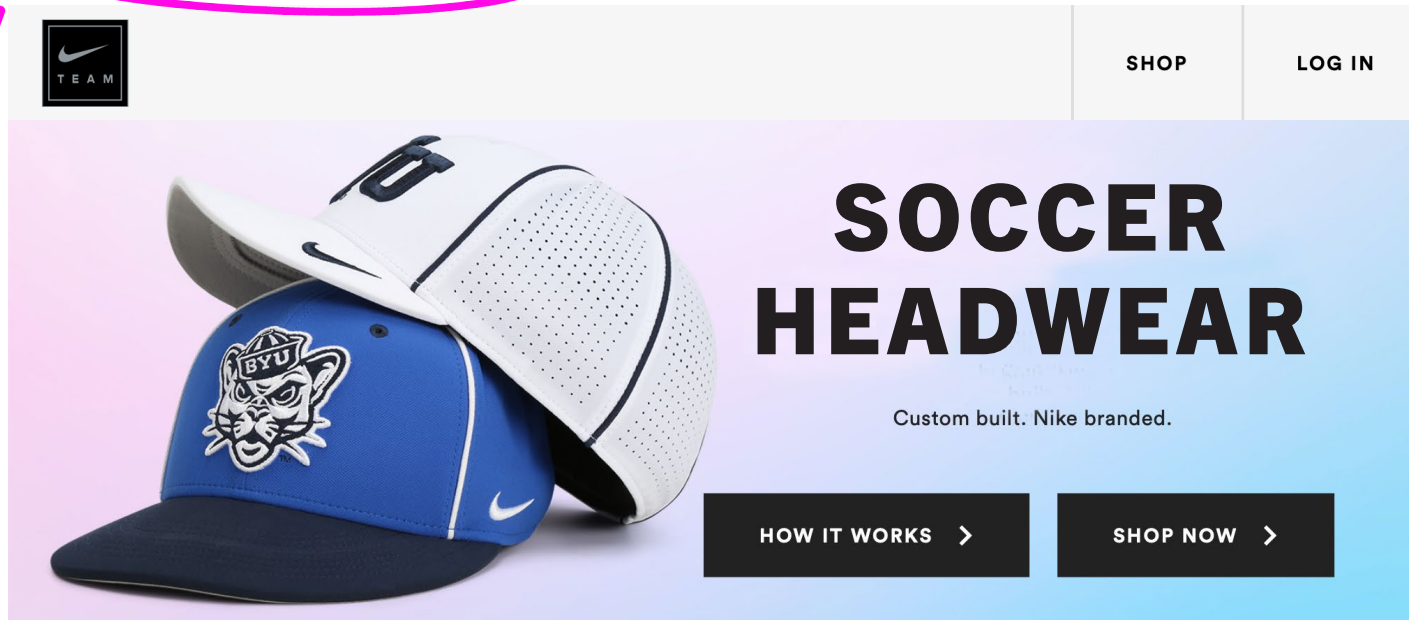
**STACY FRANKS**  
**336-549-1926**  
stacy.franks@nike.com



# BUILD CUSTOM NIKE HEADWEAR IN 3 EASY STEPS

1. Go to [nike.teamheadwear.com](https://nike.teamheadwear.com) and create an account.

GO  
HERE!



2. Design your headwear using our easy-to-use **online builder**:

- Choose from **12 CUSTOM** and **14 STOCK** headwear styles
- Select your colors, fabric & back closure
- Add your LOGO
- Customize further with add-ons like an Aerobill, piping or a player tag.

SO  
EASY.

3. Save and Send your custom design to your customer or teammate for approval.

**FAST & EASY SHIPPING! NUMEROUS DECORATING OPTIONS AVAILABLE!**

